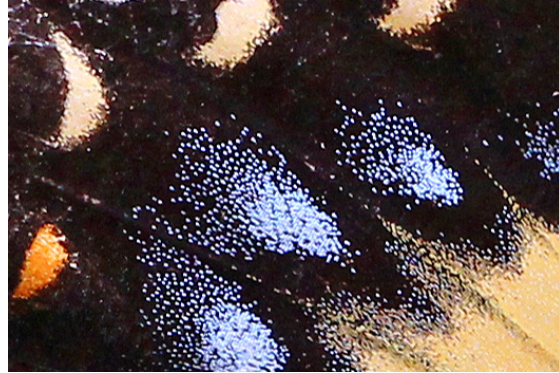


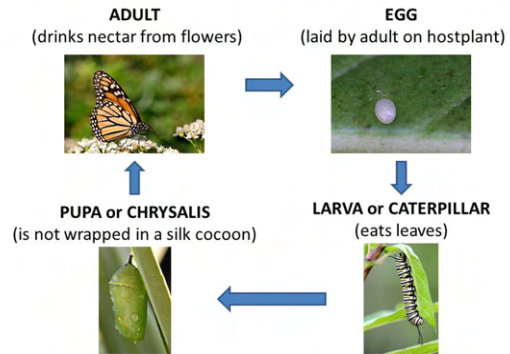
Lepidoptera

Butterflies and moths are in the insect order Lepidoptera. *Lepidos* means "scale" while *ptera* means "wings". The flattened, shingle-like scales that cover the wings give butterflies their color patterns and help to regulate body temperature.



Eastern Tiger Swallowtail - Hindwing Scales

Butterfly Metamorphosis Four Life Stages - example Monarch



Hostplants versus Nectar Plants

To provide for a butterfly's entire life cycle, butterfly gardens need both Florida native hostplants specific to each butterfly caterpillar as well as a variety of native plants that will provide flowers with nectar for adults in every season.

Host Plants

Usually caterpillars can use only a specific group of related host plants, e.g., Queen on Milkweed.



Nectar Plants

Adults use a wide variety of nectar plants, e.g., Queen on Arrowhead, Black-eyed Susan, Flat-topped Goldenrod and Water Hemlock.



Florida's State Butterfly

Zebra Heliconian, also called Zebra Longwing, is Florida's State Butterfly. The caterpillars of this species eat passionflower leaves (e.g., *Passiflora incarnata*). The adults are able to live months instead of the typical week or two for most butterflies because they can digest pollen as well as the more typical nectar from flowers.



Zebra Heliconian on Nectar Plant

Photos and species list compilation by Orlando Wetlands volunteers Mary Keim and Randy Snyder

See a new species?

Help the Wetlands keep this checklist up to date by sending additional sightings with documenting photos to orlandowetlandspark@orlando.gov

About the Orlando Wetlands

The Orlando Wetlands is open to the public for nature study and peaceful enjoyment. Recreational activities include walking, jogging, birdwatching, wildlife appreciation, nature photography and bicycling.

Directions: Drive 40 minutes east of downtown Orlando on SR 50 to Christmas, FL. Go north (left) 2.3 miles on Ft. Christmas Road (CR 420), and 1.5 miles east (right) on Wheeler Road. Parking area will be on your left.

Hours: Sunrise until sunset, seven days a week; Closed Mondays starting 10/2/23. Year round.

Free Admission



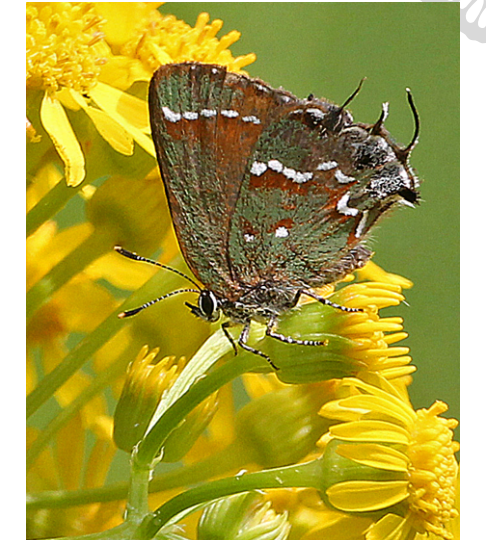
Orlando Wetlands
25155 Wheeler Road, Christmas, FL 32709
407.568.1706, orlando.gov/wetlands

Revised June 2022

Orlando Wetlands Field Checklist of Butterflies



White Peacock on Turkey Tangle Fogfruit



Juniper Hairstreak on Butterweed



Butterfly **families** are separated by solid lines while subfamilies are separated by dotted lines.

Roman numerals after each butterfly indicate the months that adults occur in Central Florida according to Glassberg, J., M.C. Minno and J.V. Calhoun. 2000. Butterflies Through Binoculars: Florida. Oxford University Press, New York.

SKIPPERS (Hesperiidae)

Dicot Skippers (Eudaminae)

-Silver-spotted Skipper (*Epargyreus clarus*) II-XII
 -Long-tailed Skipper (*Urbanus proteus*) I-XII
 -Dorantes Longtail (*Thorybes dorantes*) I-XII
 -Northern Cloudywing (*Thorybes pylades*) III-IX
 -Confused Cloudywing (*Thorybes confusus*) II-X
-

Spread-winged Skippers (Pyrginae)

-Horace's Duskywing (*Erynnis horatius*) I-XII
 -White Checkered-Sk. (*Burnsius albescens*) II-XI
 -Tropical Checkered-Sk. (*Burnsius oileus*) I -XII
-

Grass-Skippers (Hesperiinae)



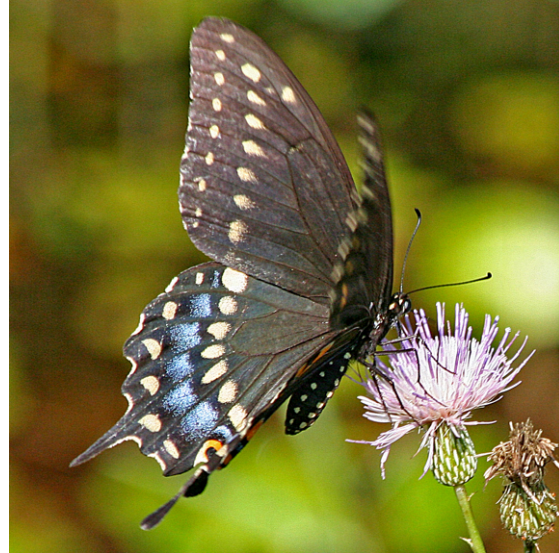
Fiery Skipper on Frostweed

-Swarthy Skipper (*Nastra lherminier*) II-XI
-Clouded Skipper (*Lerema accius*) I-XII
-Least Skipper (*Ancyloxypha numitor*) II-XI
-Southern Skipperling (*Copaeodes minima*) III-XII
-Fiery Skipper (*Hylephila phyleus*) I-XII
-Tawny-edged Skipper (*Polites themistocles*) II-XI
-Whirlabout (*Polites vibex*) I-XII
-Southern Broken-Dash (*Polites otho*) III-XI
-No. Broken-Dash (*Polites egeremet*) IV-V,VIII-X
-Sachem (*Atalopedes campestris*) II-XI
-Delaware Skipper (*Anatrytone logan*) III-XI
-Byssus Skipper (*Problema byssus*) IV-V, VIII-X
-Palatka Skipper (*Euphyes pilatka*) III-X
-Berry's Skipper (*Euphyes berryi*) (RARE) IV-V, VIII-X

-Dun Skipper (*Euphyes vestris*) III-IV, VII-X
 -Monk (*Asbolis capucinus*) IV-XI
 -Twin-spot Skipper (*Oligoria maculata*) I-XII
 -Brazilian Skipper (*Calpododes ethlius*) I-XII
 -Ocola Skipper (*Panoquina ocola*) I-XII
-

SWALLOWTAILS (Papilionidae)

-Zebra Swallowtail (*Eurytides marcellus*) I-XI
-Black Swallowtail (*Papilio polyxenes*) I-XII
-Giant Swallowtail (*Heracles crespontes*) I-XII
-Eastern Tiger Swallowtail (*Pterourus glaucus*) I-XI
-Spicebush Swallowtail (*Pterourus troilus*) II-XI
-Palamedes Swallowtail (*Pterourus palamedes*) I-XII



Black Swallowtail on Nuttail's Thistle

WHITES, ORANGETIPS AND SULPHURS (Pieridae)

Whites (Pierinae)

-Checkered White (*Pontia protodice*) II-XI
 -Great Southern White (*Ascia monuste*) III-XI
-

Sulphurs (Coliadinae)

-Orange Sulphur (*Colias eurytheme*) V-X
-Cloudless Sulphur (*Phoebis sennae*) I-XII
-Orange-barred Sulphur (*Phoebis philea*) I-XII
-Barred Yellow (*Eurema daira*) I-XII
-Little Yellow (*Pyristia lisa*) I-XII
-Sleepy Orange (*Abaeis nicippe*) I-XII
-Dainty Sulphur (*Nathalis iole*) III-XII



Dainty Sulphur

HAIRSTREAKS AND BLUES (Lycaenidae)

Hairstreaks (Theclinae)

-Great Purple Hairstreak (*Atlides halesus*) I-XII
 -Oak Hairstreak (*Satyrium favonius*) IVI-VI
 -Juniper Hairstreak (*Callophrys gryneus*) III-X
 -White M Hairstreak (*Parrhasius m-album*) III-XI
 -Gray Hairstreak (*Strymon melinus*) II-XI
 -Fulvous Hairstreak (*Electrostrymon angelia*) X-XI
 -Red-banded Hairstreak (*Calycopis cecrops*) I-XII
-

Blues (Polyommatainae)



Ceraunus Blue on White Beggarticks

-Cassius Blue (*Leptotes cassius*) III-XI
 -Ceraunus Blue (*Hemiargus ceraunus*) I-XII
-

METALMARKS (Riodinidae)

-Little Metalmark (*Calephelis virginensis*) II-XI
-

BRUSHFOOTS AND RELATIVES (Nymphalidae)

Heliconians (Heliconiinae)

-Gulf Fritillary (*Dione vanillae*) I-XII
 -Zebra Heliconian (*Heliconius charithonia*) I-XII
 -Variegated Fritillary (*Euptoieta claudia*) III-XI
-

Brushfoots (Nymphalinae)

-Phaon Crescent (*Phyciodes phaon*) II-XII
 -Pearl Crescent (*Phyciodes tharos*) II-XII
 -American Lady (*Vanessa virginiensis*) III-VIII
 -Painted Lady (*Vanessa cardui*) IV-XI
 -Red Admiral (*Vanessa atalanta*) I-XII
 -Common Buckeye (*Junonia coenia*) II-XII
 -White Peacock (*Anartia jatrophae*) III-XII
-

Admirals (Limenitidinae)



Viceroy on Water Hemlock

-Viceroy (*Limenitis archippus*) II-XII
-

Hackberry Butterflies (Apaturinae)

-Hackberry Emperor (*Asterocampa celtis*) III-XI
 -Tawny Emperor (*Asterocampa clyton*) III-XI
-

Satyrs and Wood-Nymphs (Satyrinae)

-Gemmed Satyr (*Cylopsis gemma*) II-XI
 -Carolina Satyr (*Hermeuptychia sosybius*) II-XII
 -Little Wood-Satyr (*Megisto cymela*) II-IV
-

Milkweed Butterflies (Danainae)

-Monarch (*Danaus plexippus*) I-XII
-Queen (*Danaus gilippus*) II-XII
-Soldier (*Danaus eresimus*) III-XII