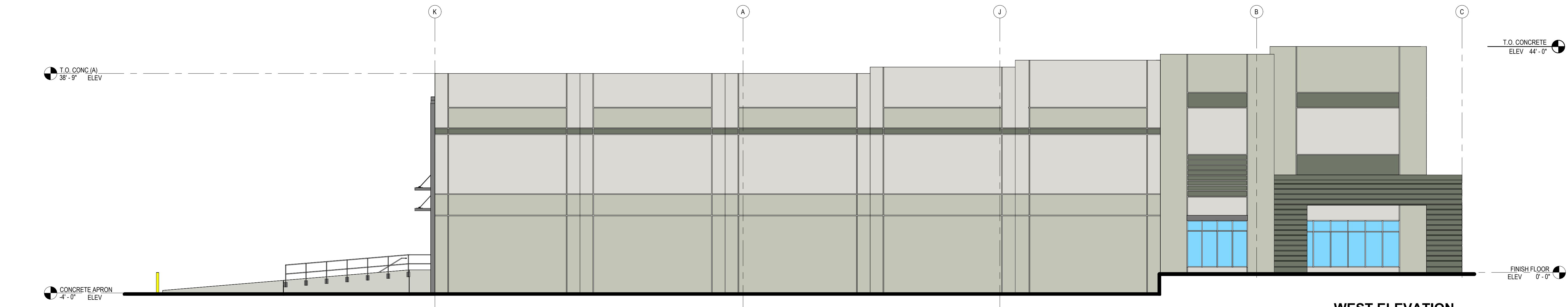
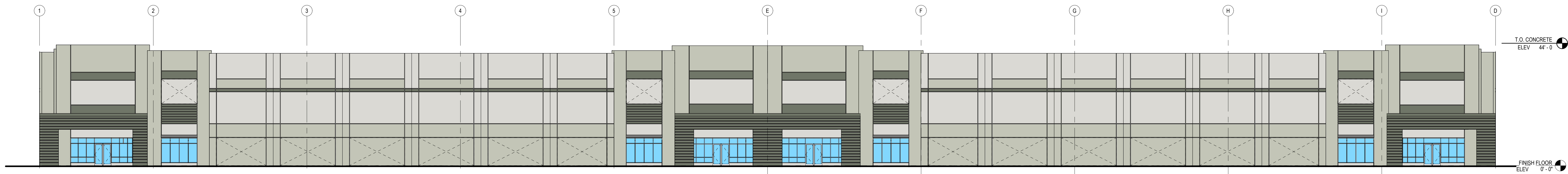


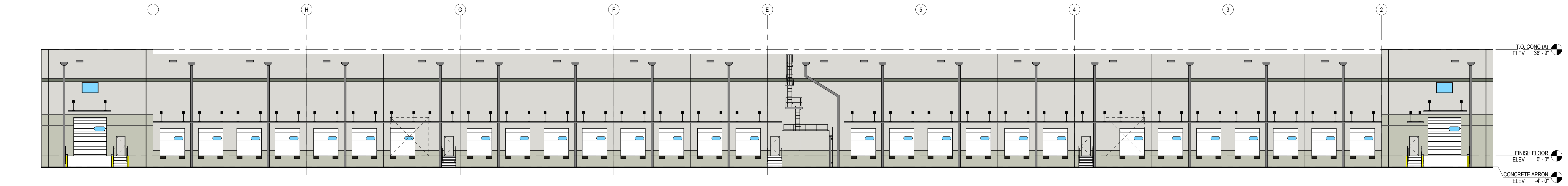
EAST ELEVATION



WEST ELEVATION



SOUTH ELEVATION



NORTH ELEVATION

## GLASS SCHEDULE

STOREFRONT SYSTEM TO BE YES 45 TU FL OR APPROVED EQUAL.  
ALL GLASS TO BE TYPE 'A' UNLESS NOTED OTHERWISE.

TYPE 'A' 1" UNIT- 1/4" VITRO SOLARBAN 70 ON SOLAR GRAY LOW-E #2 GLASS OVER 1/4" CLEAR, U VALUE .98

TYPE 'B' 9/16" THICK LAMINATED TEMPERED GLASS.

T = TEMPERED LOCATION

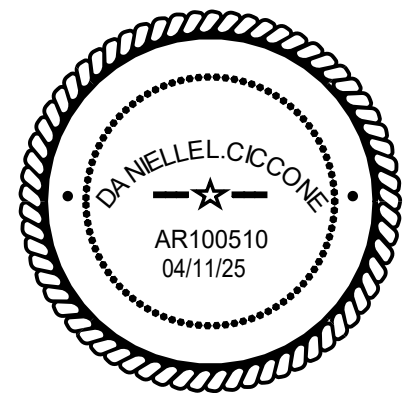
ALL STOREFRONT FRAMING TO BE CLEAR ANODIZED.

## PAINT SCHEDULE

### NOTES:

1. PAINT ALL TILT CONCRETE PANELS 'XP1' UNLESS OTHERWISE NOTED.
2. SCUPPERS, DOWNSPOUTS GUARDS, GRAVEL STOPS AND COPING TO BE KYNAR PREFINISHED. METAL COLOR TO BE SELECTED BY OWNER.
3. PAINT ALL INTERIOR AND EXTERIOR BOLLARDS, GUARDS, DOCK HAND - GUARD RAILINGS, AND LADDERS 2 COATS ACRYLIC GLOSS (SHERWIN WILLIAMS INDUSTRIAL DTM 886-110 SERIES) SAFETY YELLOW.
4. IF THE DECK IS WELDED DOWN, ALL WELD MARKS ON DECK MUST BE TOUCHED UP WITH PAINT.
5. ALL EXTERIOR TILT CONCRETE TO BE SMOOTH FINISH.
6. DIRECT METAL PRIMER TO BE USED ON ALL GALVANIZED METAL.
7. PAINT FIRE RISERS RED.
8. CONTRACTOR TO PROVIDE A MOCK-UP OF THE PROPOSED COLOR SCHEME ON ONE FULL TILT PANEL FOR OWNER REVIEW PRIOR TO ORDERING ADDITIONAL PAINT.
9. PAINT ALL EXTERIOR HM DOOR AND FRAMES XP1 U.O.N.
10. EXTERIOR TILT CONCRETE PAINT TO BE SHERWIN WILLIAMS LOXON SELF-CLEANING ACRYLIC FLAT LX13-SERIES (5-7 MILS WFT OR 2.0-2.8 MILS DFT). ONE COAT PRIMER PLUS 2 FINISH COATS AS RECOMMENDED BY MANUFACTURER.
11. PAINT THE BACK SIDE OF ALL EXPOSED PARAPETS XP1.
12. PAINT RAMP GUARDRAILS SAFETY YELLOW.
13. INTERIOR FACE TILT CONCRETE PANELS TO BE PRESSURE WASHED AND PAINTED WHITE. ALKALI RESISTANT WATER BASED PRIMER AND (1) COAT INTERIOR LATEX PAINT.

- XP1 FIELD COLOR - FLAT  
SHERWIN WILLIAMS - 10 FIRST STAR
- XP2 ACCENT COLOR - FLAT  
SHERWIN WILLIAMS - 7 LIQUORICE TINT
- XP3 ACCENT COLOR - FLAT  
SHERWIN WILLIAMS - 8 DRAKE
- XP5 INDICATES FORMLINER:  
ARCHITECTURAL  
POLYMERS- SLUMP STONE  
#028  
TO BE PAINTED XP1



## Revision Record

Revision Number	Revision Description	Revision Date
-----------------	----------------------	---------------

## AIPO-T26.1

SPECULATIVE WAREHOUSE  
ORLANDO, FLORIDA 33824



Prologis Regional Office  
300 S ORANGE AVE,  
ORLANDO, FL, 32801  
407.648.292  
<https://www.prologis.com/>

Date 04/11/25 Project No. 25095

Sheet Title  
EXTERIOR ELEVATIONS

Sheet No. SK-02

Released for Construction  
Not Released for Construction