

GVD3
Granville Classic Utility LED3

SPECIFICATIONS

General Description
The Granville Classic Utility LED3 is designed for ease of maintenance with the plug-in electrical module common to each of the luminaires in Holophane's Utility Luminaire Series. The traditional arrow-shaped luminaire, while reminiscent of the 1920s, contains a powerful, slush-mounted Chip-On-Board LED platform with a precision optical system that maximizes post-glaring while maintaining uniform illumination.

Mechanical Specifications
The luminaire housing shall:
• Be heavy grade 350K cast aluminum (aluminum with <1% copper)
• IP55 rated housing provides tool-less access with a spring-loaded latch
• Incorporates a hidden hinge door allowing the door to swing open and remain open
• Offer units with an ED- NEMA twist lock photocontrol receptacle, the housing contains a tempered glass window to allow light to reach the cell
• Mount to slip-fitter that will accept 3" high by 2-7/8" to 3-1/8" O.D. pole tenon
• Provide four uniquely designed stainless steel spring clips, enclosed in a clear polycarbonate sleeve and adjusted by 1/4-20 hex head bolts that securely cradle the prismatic glass reflector. The same 1/4-20 bolts also support the decorative rib and banding assembly.
The finish shall:
• Utilize a polyester power coat paint to ensure maximum durability
• Rigorous multi-stage pre-treating and painting process yields a finish that achieves a scribe crevice rating of 1 per ASTM D1654 after over 5000 hours exposure to salt fog chamber (operated per ASTM B117) on standard and RAL finish options.
• RAL (RALxxxxDCC) paint colors are Super Durable Corrosion Resistant, 80% gloss.

Electrical Specifications
The driver shall meet the following requirements:
• Certified by UL or CSA for wet locations
• Factory programmable electronic driver with 0-10V dimming control leads
• LEDs shall have a minimum of 70,000 hours and available in 2700K, 3000K, 4000K, and 5000K CCT
• The electrical system shall be designed to meet ANSI/IEEE C62.41.2 and shall offer a 10kV/5kA surge protection, full off, as standard with an upgradable 20kV/10kA surge protection, full off with indicator light, option
• Luminaire output can be customized prior to manufacturing by way of PF09A Options
• The electrical components are mounted on an aluminum plate that is removable with minimum use of tools. A matching low conductor plug connects to the receptacle in the luminaire housing to complete the wiring. For photoelectric operation, the electrical module is provided with an ED- NEMA twist lock photocontrol receptacle.

Optical Specifications
The optical system is precision cast and consists of a precisely molded thermal resistant borosilicate glass reflector and top reflector mounted within the decorative glass optic. The top reflector is recessed over 50% of the upward light into the controlling reflector while allowing a slip-up light component to define the traditional arrow shape of the luminaire. The lower reflector uses precision molded prisms to maximize the pole-spacing while maintaining uniform illumination. Two reflectors are available, designed for IES type III and V distributions. Lower Optics shielding is available for symmetric and asymmetric distributions.

Control Options
The control options shall include, but not limited to, the following:
• Field adjustable output to adjust output to luminaire - AO
• Long life photocontrol, 20 years - PCLL, P34 and P48 with DTL
• 7 pin receptacles internally in housing (P37) or inside glass mounted (P37E - not for use with photocontrols & nodes must have photocontrol disabled)
• Night Air (RS086) outdoor fixture-mounted motion and photo-sensor, features a dual radio to communicate wirelessly to other light fixtures for group response formation, on/off control in response to daylight and by switch - RS086
• Fixture embedded rLight Airwork interface for individual fixture control and dimming - NL04R2.

Certification and Standards
• Luminaires shall be UL or CSA listed.
• Suitable for operation in an ambient temperature up to 40°C / 105°F per UL or CSA certification
• IAPCO compliant
• Design Lights Consortium (DLC) Premium qualified product and DLC qualified product. Not all versions of this product may be DLC Premium qualified or DLC qualified. Please check with the DLC Qualified Products List at www.designlights.org/DLC to confirm which version are qualified.

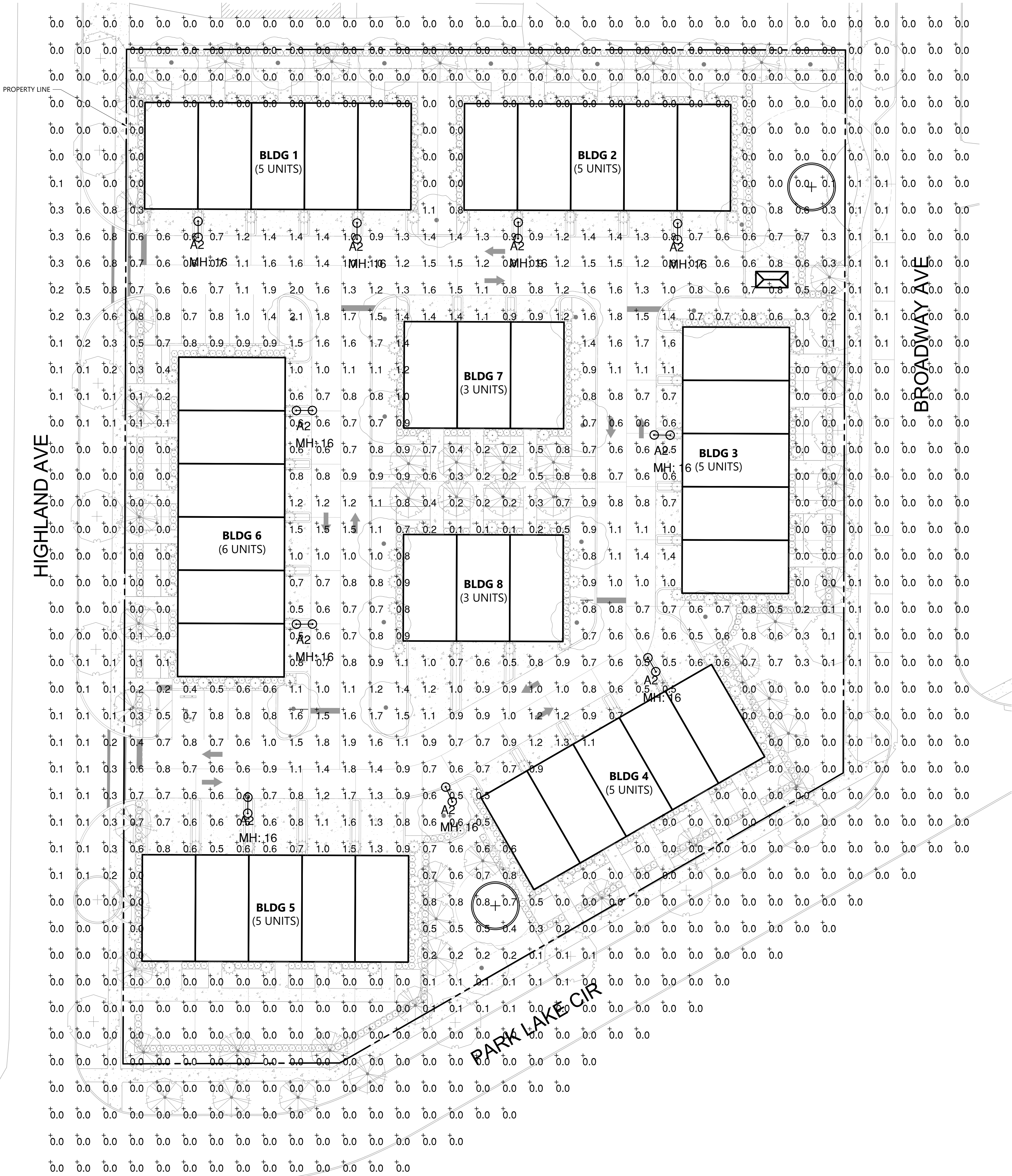
Government Procurement
BAA - Buy American Act: Product qualifies as a domestic end product under the Buy American Act as implemented in the FAR and DFARS. Product also qualifies as manufactured in the United States under DOT Buy America regulations.
BABA - Build America Buy America Act: Product qualifies as produced in the United States under the definitions of the Build America, Buy America Act.
Please refer to www.acuitybrands.com/resources/buy-american for additional information.

Warranty
5-year limited warranty. This is the only warranty provided and no other statements in this specification sheet create any warranty of any kind. All other express and implied warranties are disclaimed. Complete warranty terms located at: www.acuitybrands.com/support/warranty-terms-and-conditions.

Note: Actual performance may differ as a result of end-user environment and application. All values are design or typical values, measured under laboratory conditions at 25 °C. Specifications subject to change without notice.

GVD3
Granville Classic Utility LED3

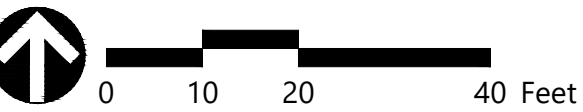
ORDERING INFORMATION				Example: GVD3 P30 30K MVOLT MS GL3 BK RB ST 1BK AO			
Series	LED Performance Package	LED Color temperature	Voltage	Mounting Style			
GVD3 Granville Classic Utility LED3	P16 3,300 nominal lumens	27K 2700K CCT	MVOLT AUTO-SENSING 120-277V 50/60HZ	MS	Modern Style Swing Open Design		
	P20 5,500 nominal lumens	30K 3000K CCT	MVOLT AUTO-SENSING 347-480V 50/60HZ	LS	Leaf Style Swing Open Design		
	P30 8,000 nominal lumens	40K 4000K CCT					
	P40 10,900 nominal lumens	50K 5000K CCT					
	P50 13,200 nominal lumens						
Optics		Housing Color	Trim	Finish	Final Color		
GL3 Glass, Type III	BK	Black	[Blank] No Trim	[Blank] No Finish	TBK	Black	
GL5 Glass, Type V	BZ	Bronze	RB Ribs & Band	BL Ball	TBZ	Bronze	
GL10 Glass, Type III	GH	Graphite	SY Synapse Style with Cover (MS Housing only)	CL Clear	TGL	Gold	
GL10 Glass, Type III	GN	Green		EG Eagle	TGN	Green	
GL10 Glass, Type V	GR	Grey		FL Flower	TGR	Grey	
GL10 Glass, Type V	PP	Prism Paint		PN Pawn	TGP	Prism Paint	
	WH	White		CR Cross	TPP	White	
	CNC	CustomMatchColor Finish		ST Standard	TWH	CustomMatchColor Finish	
	XX	STD Finish, TBD		RM Roman Cross	TMC	STD Finish, TBD	
	RALxxxxDCC	RAL Super Durable Corrosion Resistant, 80% Gloss Paint, replace xxx with RAL number.			TRALxxxxDCC	RAL Super Durable Corrosion Resistant, 80% Gloss Paint, replace xxx with RAL number.	
					TX	STD Finish, TBD	
Options: Option Compatibility Matrix on page 3 of 4							
CONTROLS OPTIONS				PREWIRED LEAD OPTIONS		COVER OPTIONS	
AO	Field Adjustable Output			LH1	1.5 ft prewired leads	FC	Full Cover
PR7	NEMA twistlock dimming photocontrol receptacle - 7 pin			LH3	3 ft prewired leads	MC	Mayfield Half Cover
PR7E	NEMA twistlock dimming photocontrol receptacle - 7 pin (Under Glass)			LH6	10 ft prewired leads	NEMA LABEL OPTIONS	
PCLL	Long Life DTL Twinklock Photocontrol for Solid State, MVOLT			L20	20 ft prewired leads		
P34	Long Life DTL Twinklock Photocontrol for Solid State, 347V			L25	25 ft prewired leads		
P48	Long Life DTL Twinklock Photocontrol for Solid State, 480V			L30	30 ft prewired leads	NL101	1" X 1" ANSI Wattage Label
SH	Shorting Cap					NL202	2" X 2" ANSI Wattage Label
RS086	rLight Motion Sensing Photocontrols						
NL04R2	rLight rD 2.0 Antenna						
DRIVER ELECTRICAL OPTIONS							
PF09A	Factory Programmed Driver						
20kV	Extreme surge protection 20kV/10kA, full off with indicator light						
Accessories: Order as separate catalog number							
DECORATIVE BAND OPTIONS				HOUSE SIDE SHIELD OPTIONS			
GVBANDX	Decorative Band			GVDH5090	House Side Shield Solid 90°		
	NOTE: Field installed. For use with units without factory installed ribs and band. X = Band color, example GVBANDX (black).			GVDH5102	House Side Shield Solid 120°		
				GVDH5108	House Side Shield Solid 180°		
				GVDH5109	House Side Shield Solid 90° (Lunar)		
				GVDH5112	House Side Shield Solid 120° (Lunar)		
				GVDH5118	House Side Shield Solid 180° (Lunar)		



Landreth Lighting Calculation Summary	
Label	Drive Lanes
CalcType	Footcandle
Avg	1.0
Max	2.0
Min	0.5
Avg/Min	2.0
Max/Min	4.0

Landreth Lighting Luminaire Schedule	
Symbol	[MANUFAC]
Q	Holophane
Arrangement	
Back-Back	
Description	
OUC PROVIDED GVD3 P30 30K XXXX GL5 MATCH CITY STREETSCAPE ASSEMBLY	
BUG Rating	
B3-U4-G3	
Lum. Lumens	
5593	
Lum. Watts	
39	
LLF	
1.000	

vhb
225 E. Robinson Street
Suite 300
Orlando, FL 32801
407.839.4006
Certificate of Authorization
Number FL #3932



Park Lake Apartments

City of Orlando, Florida

No.	Revision	Date	Apprv.

Designed by	Checked by	Scale
KLS	EG	As Noted
Issued for		Date

Vertical Datum NAVD 88

Photometric Plan

Drawing Number
P1.00
Sheet of
Christopher Shawn Toffe
LA 6667432
Aug. 25, 2025
66781.00
Project Number