

LA RUA BUSINESS PARK, A REPLAT

A REPLAT OF LOT 3, AIRPORT DISTRIBUTION CENTER, PHASE 1H, PLAT BOOK 42, PAGES 15-16, LOT 2, AIRPORT DISTRIBUTION CENTER, PHASE 1G, PLAT BOOK 40, PAGES 70 -71 AND A PARTIAL REPLAT OF LOT 23, BLOKC I, PROSPER COLONY, PLAT BOOK D, PAGE 103 OF THE PUBLIC RECORDS OF ORANGE COUNTY FLORIDA

SECTION 6, TOWNSHIP 24 SOUTH, RANGE 30 EAST

CITY OF ORLANDO, ORANGE COUNTY, FLORIDA

LINE	BEARING	DISTANCE
L1	N 43°33'50" W	59.21'
L2	N 37°27'25" W	48.01'
L3	S 85°26'12" W	73.78'
L4	S 30°02'54" W	86.02'
L5	S 76°20'17" W	39.83'
L6	S 69°51'40" W	36.94'
L7	S 79°11'15" W	36.44'
L8	S 64°21'44" W	18.34'
L9	S 04°12'36" W	8.99'
L10	S 12°14'31" E	32.65'
L11	S 12°39'53" W	30.25'
L12	S 18°44'19" W	66.07'
L13	S 13°56'54" W	11.78'
L14	S 30°50'57" W	45.78'
L15	S 35°06'41" W	41.44'
L16	S 84°28'36" W	30.57'
L17	N 85°55'20" W	16.49'
L18	S 23°09'32" W	15.47'
L19	S 68°04'19" W	20.80'
L20	N 80°10'55" W	16.08'
L21	N 00°04'21" E	266.77'
L22	S 89°50'52" E	57.28'
L23	N 16°23'18" E	38.98'
L24	S 57°55'59" E	34.78'
L25	S 57°55'59" E	34.24'
L26	S 57°55'59" E	5.98'
L27	S 03°15'39" W	298.71'
L28	S 86°14'39" E	30.00'
L29	S 86°03'48" E	4.78'
L30	N 03°15'39" E	282.48'
L31	S 62°40'56" E	99.85'
L32	S 86°12'00" E	163.94'
L33	S 62°40'56" E	99.83'
L34	S 86°12'00" E	163.96'
L35	N 62°40'56" W	99.35'
L36	N 86°12'00" W	163.92'
L37	S 86°12'00" E	30.59'
L38	S 86°12'00" E	17.70'

LINE TABLE

CURVE	RADIUS	ARC LENGTH	CHORD LENGTH	CHORD BEARING	DELTA ANGLE
C1	1208.24'	358.18'	356.87'	N 23°34'36" E	16°59'06"
C2	100.00'	41.05'	40.76'	S 74°26'28" E	23°31'04"
C3	125.00'	51.31'	50.95'	S 74°26'28" E	23°31'04"
C4	75.00'	30.79'	30.57'	N 74°26'28" W	23°31'04"
C5	1208.24'	244.74'	244.32'	N 20°53'13" E	11°36'20"
C6	1208.24'	25.00'	25.00'	N 27°16'57" E	1°11'08"
C7	1208.24'	25.01'	25.01'	N 28°28'06" E	1°11'09"
C8	1208.24'	63.43'	63.43'	N 30°33'55" E	3°00'29"

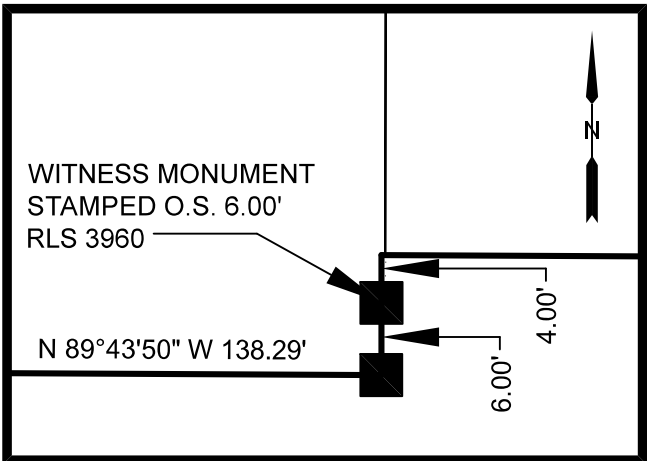
CURVE TABLE

LEGEND & ABBREVIATIONS ALL SHEETS

- 4"x4" ZINC PLATE MONUMENT WITH 1/2" BRASS DISK STAMPED PERMANENT REFERENCE MONUMENT, P.L.S. 3960
- 2 1/2" BRASS DISK WITH PK NAIL STAMPED PERMANENT CONTROL POINT, P.L.S. 3960
- 5/8" IRON ROD WITH 1 1/4" PLASTIC CAP STAMPED RUDD PLS 3960

P.B. - PLAT BOOK
P.G. - PAGE
O.R.B. - OFFICIAL RECORDS BOOK
P.C. - POINT OF CURVATURE
P.T. - POINT OF TANGENCY
P.O.C. - POINT ON CURVE
C.C.R. - CERTIFIED CORNER RECORD
C1 - CURVE TABLE NUMBER
L1 - LINE TABLE NUMBER
C/L - CENTERLINE
SEC. - SECTION
TWP. - TOWNSHIP
RGE. - RANGE

RUDD
MICHAEL RUDD & ASSOCIATES, LLC
Florida Licensed Business L.B. No. 8067
1210 Bahama Drive
Orlando, Florida 32806
phone: (407) 342-0676



INSET A
WITNESS MONUMENT DETAIL
NOT - TO - SCALE

POINT OF BEGINNING

SOUTHWEST CORNER LOT 3,
AIRPORT DISTRIBUTION
CENTER PHASE 1H
(P.B. 42, PGS 15 & 16)

