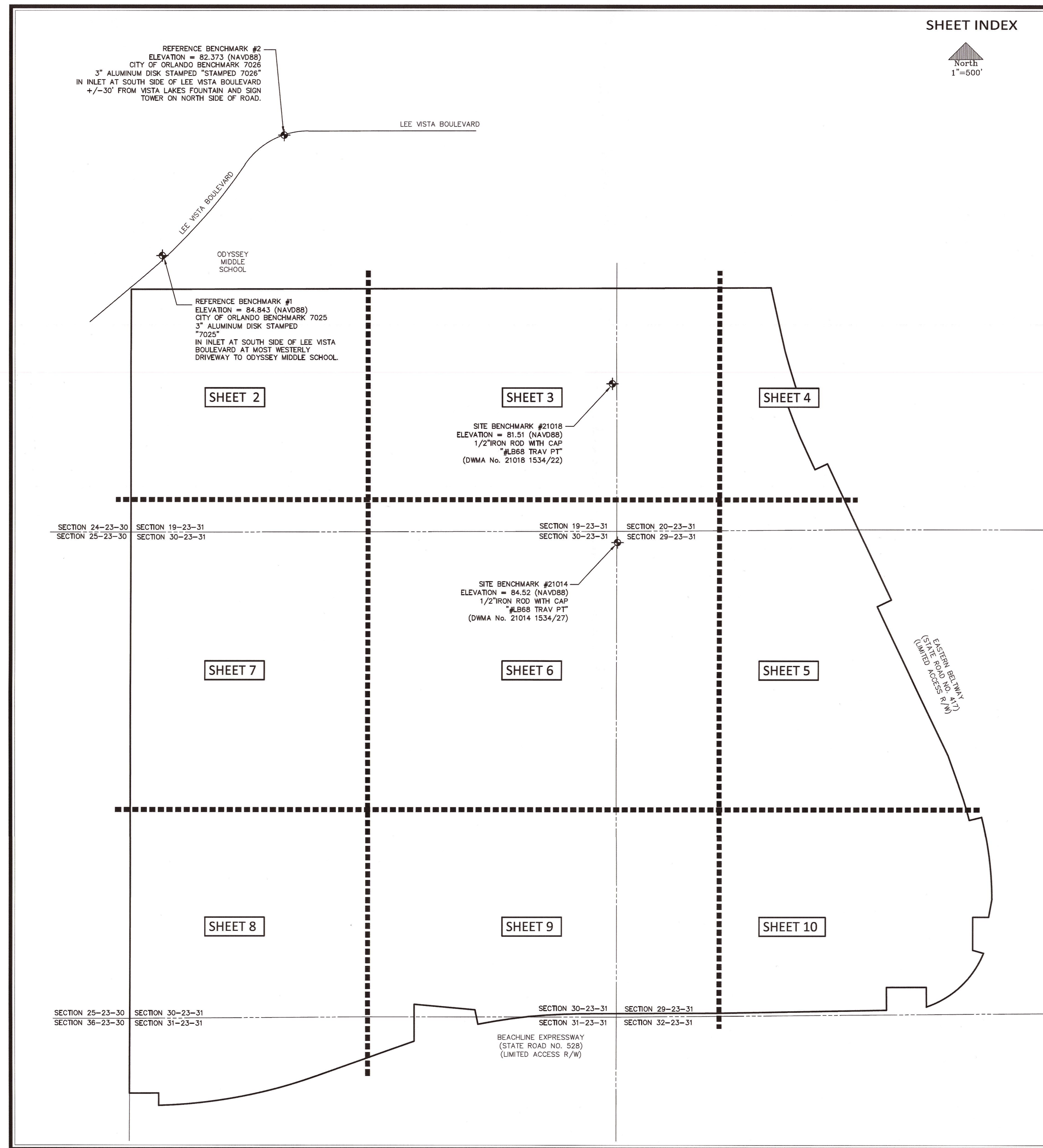
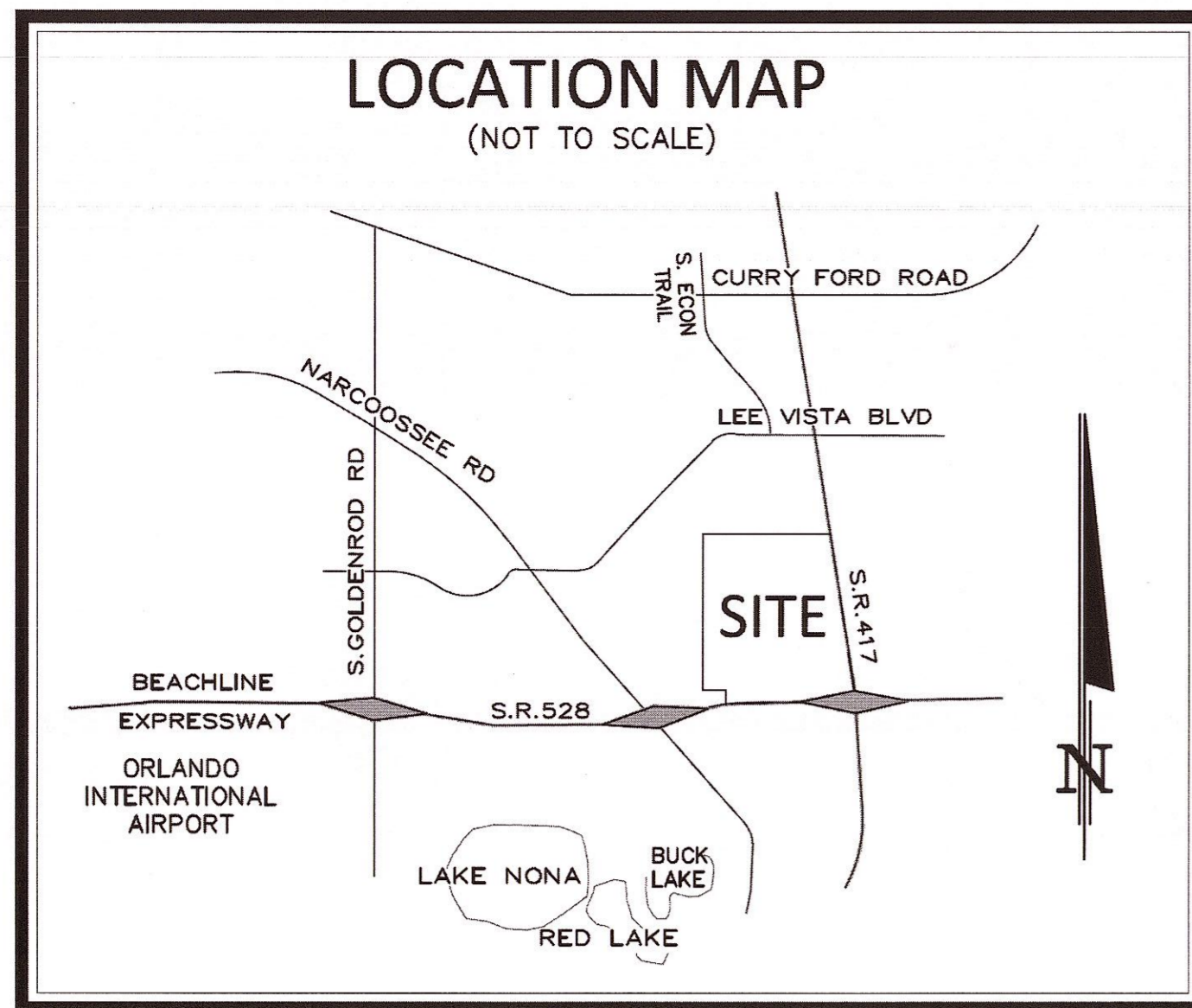
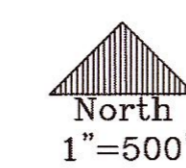


TOPOGRAPHIC SURVEY

NOTE: ELEVATIONS SHOWN HEREON ARE RELATIVE TO NAVD88 VERTICAL DATUM.



SHEET INDEX



LEGEND and ABBREVIATIONS table listing symbols for various features like lines, curves, structures, and utilities, along with their corresponding abbreviations.

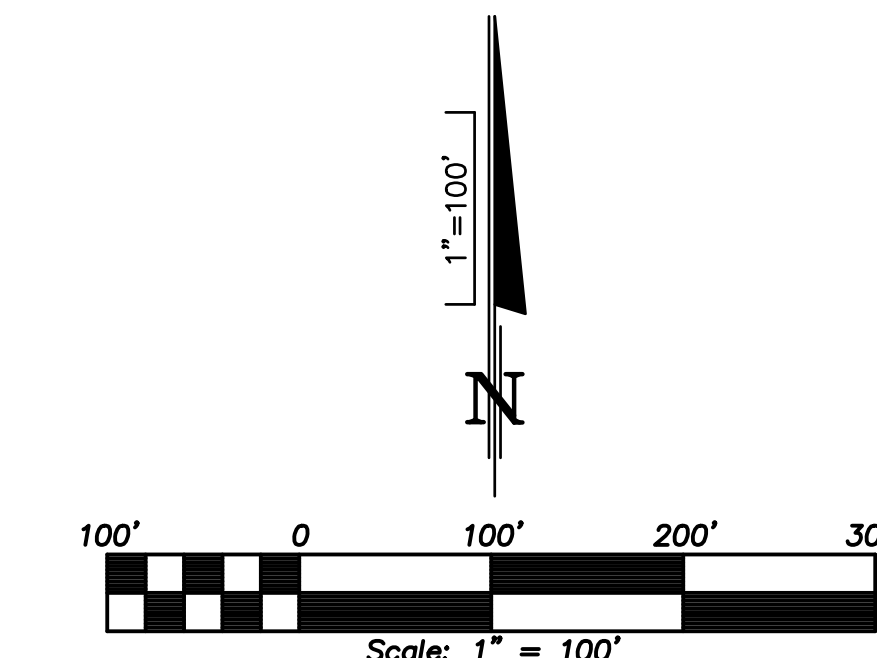
- SURVEYORS NOTES: 1. This is not a boundary survey. 2. Not valid without the signature and the original raised seal of a Florida licensed surveyor and mapper. 3. The features, linework and coordinates shown hereon are in grid position, relative to National Geodetic Survey Monument "GIS 211 Bob Dundon"...

Professional seal and title block for Donald W. McIntosh Associates, Inc. Surveyors, including name, address, and registration information.

Project title block for Beachline North Residential, LLC, including drawing title, sheet number (1 of 10), date, and signature of the surveyor.

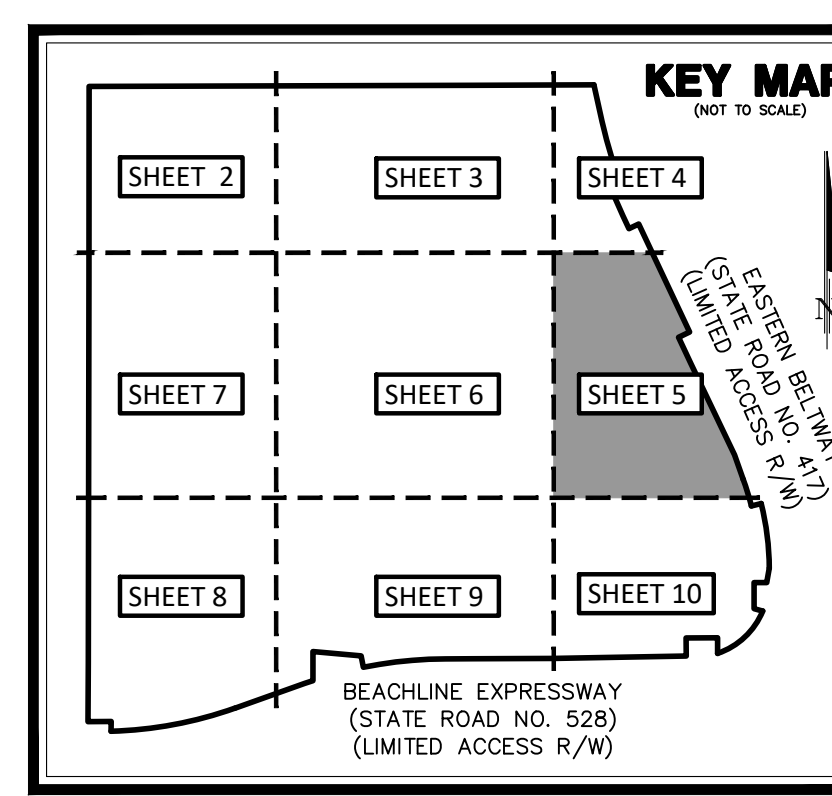
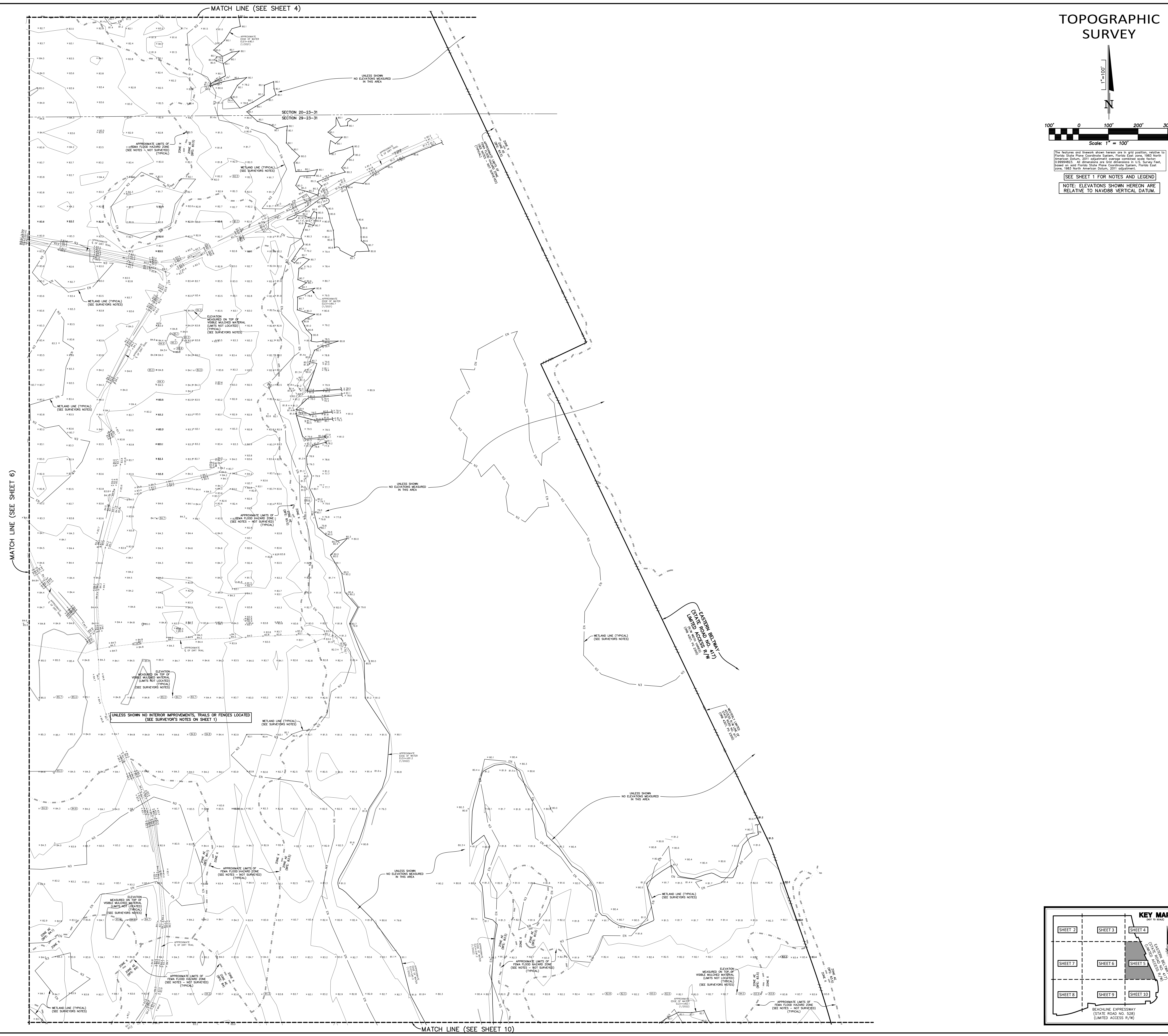
Small text at the bottom left corner containing file names and project identifiers.

TOPOGRAPHIC SURVEY



The boundary and framework shown herein are in grid position, relative to Florida State Plane Coordinate System, Florida East Zone, 1983 North American Datum, 2011 adjustment, average combined scale factor: 0.99994823. All dimensions are Grid dimensions in U.S. Survey Feet, based on used Florida State Plane Coordinate System, Florida East Zone, 1983 North American Datum, 2011 adjustment.

NOTE: ELEVATIONS SHOWN HEREON ARE RELATIVE TO NAVD83 VERTICAL DATUM.



DONALD W. MCINTOSH ASSOCIATES, INC.

DONALD W. MCINTOSH ASSOCIATES, INC.
PLANNERS ENGINEERS SURVEYORS
2200 PARK AVENUE NORTH, WINTER PARK, FLORIDA 32789 (407) 644-4088
CERTIFICATE OF AUTHORIZATION NO. 1888

NO.	DATE	DESCRIPTION
1	10/24/2022	ISSUED FOR PERMITS

DRAWN BY: PH
CHECKED BY: SG
DATE: 1/2022

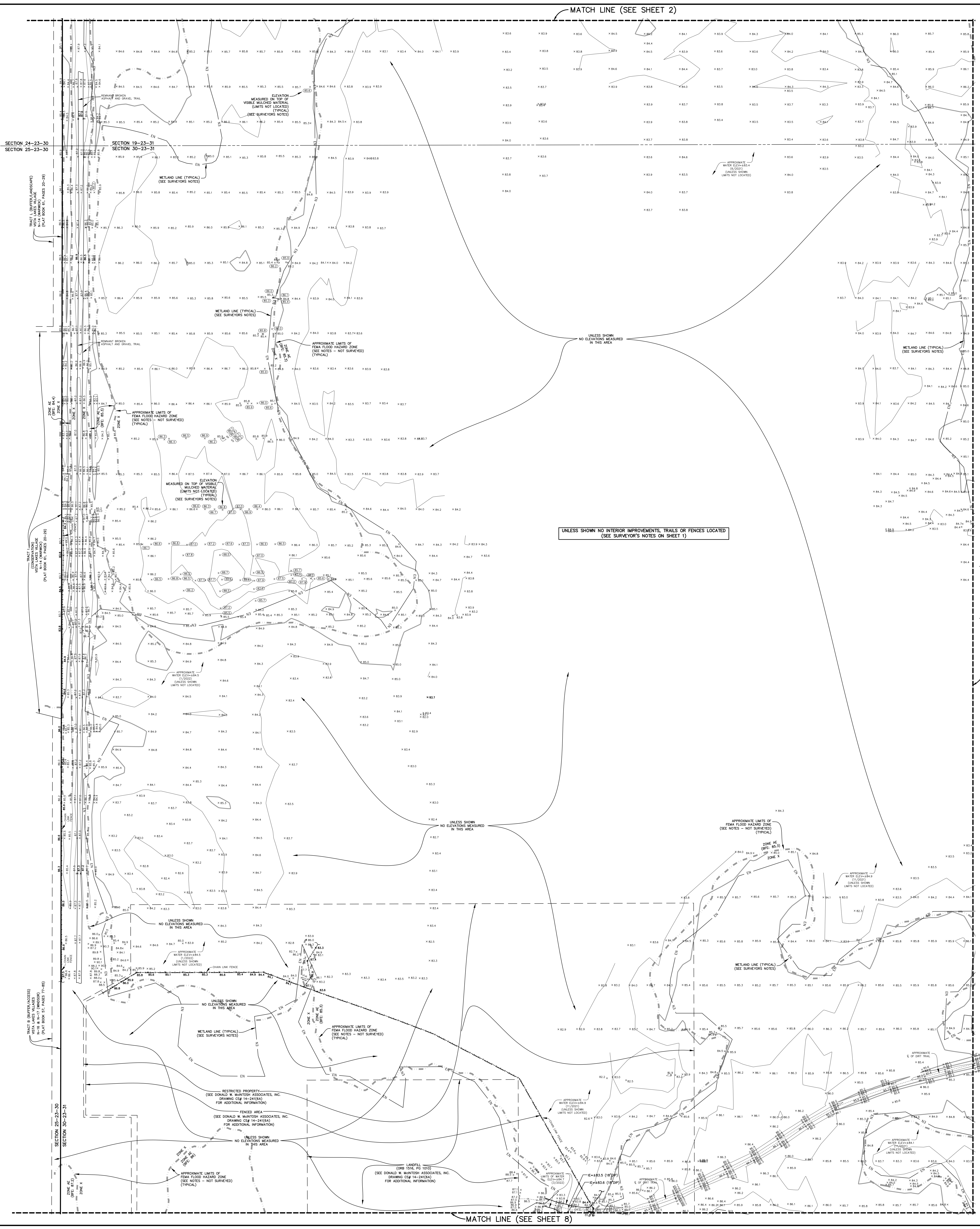
JOB NUMBER: 202576
SCALE: 1" = 100'

5 of 10
SHEET

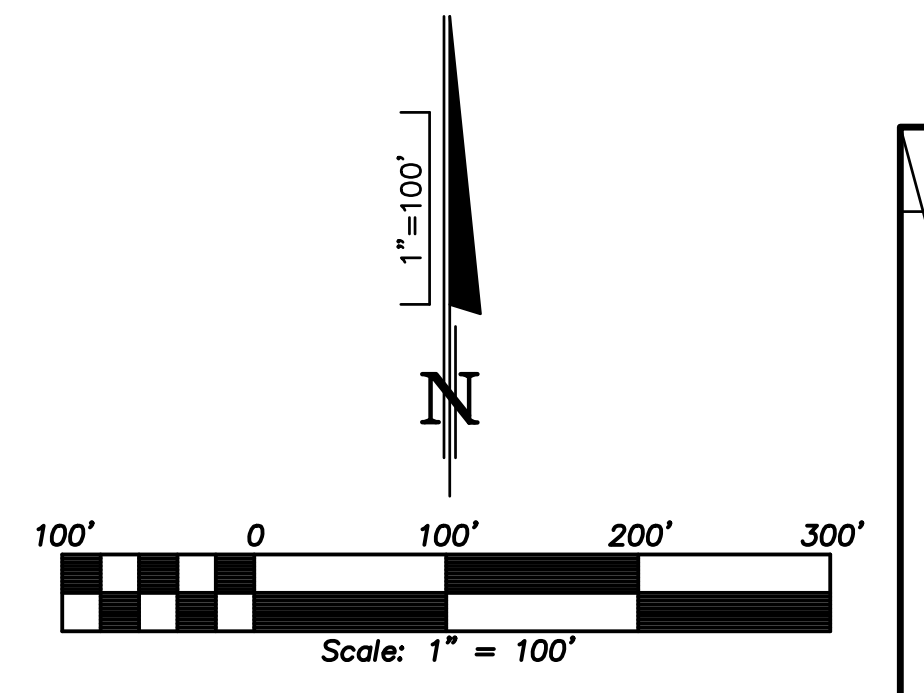
PREPARED FOR:
Beachline North Residential, LLC

Beachline Topographic Survey (Portions of Sections 19, 20, 29, 30 & 31, Township 23 South, Range 31 East, Orange County, Florida)

F:\Projects\19088\Survey\19088\19088.dwg (1/2022) Revised: Topographic Survey (19088-201) 1/2022



TOPOGRAPHIC SURVEY



The boundary and elevation shown herein are in grid position, relative to Florida State Plane Coordinate System, Florida East Zone, 1983 North American Datum, 2011 adjustment, average combined scale factor: 0.99994823. All dimensions are Grid dimensions in U.S. Survey Feet, based on used Florida State Plane Coordinate System, Florida East Zone, 1983 North American Datum, 2011 adjustment.

SEE SHEET 1 FOR NOTES AND LEGEND

NOTE: ELEVATIONS SHOWN HEREON ARE RELATIVE TO NAVD83 VERTICAL DATUM.

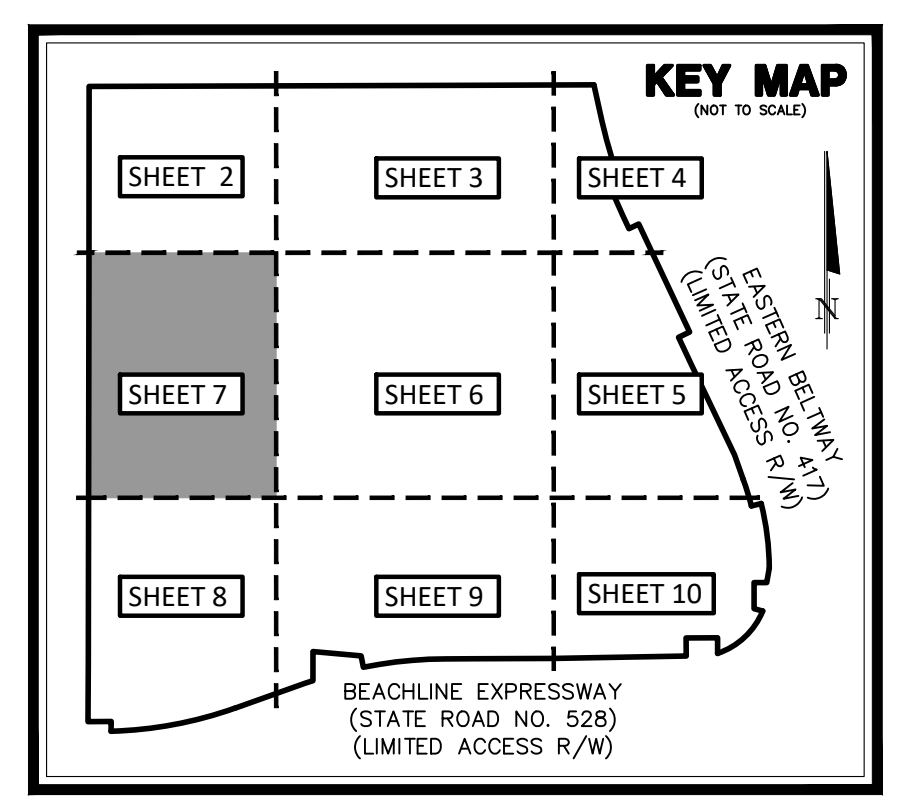
UNLESS SHOWN NO INTERIOR IMPROVEMENTS, TRAILS OR FENCES LOCATED (SEE SURVEYOR'S NOTES ON SHEET 1)

UNLESS SHOWN NO ELEVATIONS MEASURED IN THIS AREA

UNLESS SHOWN NO ELEVATIONS MEASURED IN THIS AREA

MATCH LINE (SEE SHEET 6)

MATCH LINE (SEE SHEET 8)



DONALD W. MCINTOSH ASSOCIATES, INC.

DONALD W. MCINTOSH ASSOCIATES, INC.
ENGINEERS
2200 PARK AVENUE NORTH, WINTER PARK, FLORIDA 32789 (407) 644-4088
CERTIFICATE OF AUTHORIZATION NO. 1888

BEACHLINE NORTH RESIDENTIAL, LLC

DRAWN BY: PH DATE: 1/2022

CHECKED BY: SG

JOB NUMBER: 202576

SCALE: 1" = 100'

REVISIONS

DATE

DESCRIPTION

NO. DATE

1 1/2022

2 1/2022

3 1/2022

4 1/2022

5 1/2022

6 1/2022

7 1/2022

8 1/2022

9 1/2022

10 1/2022

11 1/2022

12 1/2022

13 1/2022

14 1/2022

15 1/2022

16 1/2022

17 1/2022

18 1/2022

19 1/2022

20 1/2022

21 1/2022

22 1/2022

23 1/2022

24 1/2022

25 1/2022

26 1/2022

27 1/2022

28 1/2022

29 1/2022

30 1/2022

31 1/2022

32 1/2022

33 1/2022

34 1/2022

35 1/2022

36 1/2022

37 1/2022

38 1/2022

39 1/2022

40 1/2022

41 1/2022

42 1/2022

43 1/2022

44 1/2022

45 1/2022

46 1/2022

47 1/2022

48 1/2022

49 1/2022

50 1/2022

51 1/2022

52 1/2022

53 1/2022

54 1/2022

55 1/2022

56 1/2022

57 1/2022

58 1/2022

59 1/2022

60 1/2022

61 1/2022

62 1/2022

63 1/2022

64 1/2022

65 1/2022

66 1/2022

67 1/2022

68 1/2022

69 1/2022

70 1/2022

71 1/2022

72 1/2022

73 1/2022

74 1/2022

75 1/2022

76 1/2022

77 1/2022

78 1/2022

79 1/2022

80 1/2022

81 1/2022

82 1/2022

83 1/2022

84 1/2022

85 1/2022

86 1/2022

87 1/2022

88 1/2022

89 1/2022

90 1/2022

91 1/2022

92 1/2022

93 1/2022

94 1/2022

95 1/2022

96 1/2022

97 1/2022

98 1/2022

99 1/2022

100 1/2022

101 1/2022

102 1/2022

103 1/2022

104 1/2022

105 1/2022

106 1/2022

107 1/2022

108 1/2022

109 1/2022

110 1/2022

111 1/2022

112 1/2022

113 1/2022

114 1/2022

115 1/2022

116 1/2022

117 1/2022

118 1/2022

119 1/2022

120 1/2022

121 1/2022

122 1/2022

123 1/2022

124 1/2022

125 1/2022

126 1/2022

127 1/2022

128 1/2022

129 1/2022

130 1/2022

131 1/2022

132 1/2022

133 1/2022

134 1/2022

135 1/2022

136 1/2022

137 1/2022

138 1/2022

139 1/2022

140 1/2022

141 1/2022

142 1/2022

143 1/2022

144 1/2022

145 1/2022

146 1/2022

147 1/2022

148 1/2022

149 1/2022

150 1/2022

151 1/2022

152 1/2022

153 1/2022

154 1/2022

155 1/2022

156 1/2022

157 1/2022

158 1/2022

159 1/2022

160 1/2022

161 1/2022

162 1/2022

163 1/2022

164 1/2022

165 1/2022

166 1/2022

167 1/2022

168 1/2022

169 1/2022

170 1/2022

171 1/2022

172 1/2022

173 1/2022

174 1/2022

175 1/2022

176 1/2022

177 1/2022

178 1/2022

179 1/2022

180 1/2022

181 1/2022

182 1/2022

183 1/2022

184 1/2022

185 1/2022

186 1/2022

187 1/2022

188 1/2022

189 1/2022

190 1/2022

191 1/2022

192 1/2022

193 1/2022

194 1/2022

195 1/2022

196 1/2022

197 1/2022

198 1/2022

199 1/2022

200 1/2022

201 1/2022

202 1/2022

203 1/2022

204 1/2022

205 1/2022

206 1/2022

207 1/2022

208 1/2022

209 1/2022

210 1/2022

211 1/2022

212 1/2022

213 1/2022

214 1/2022

215 1/2022

216 1/2022

217 1/2022

218 1/2022

219 1/2022

220 1/2022

221 1/2022

222 1/2022

223 1/2022

224 1/2022

225 1/2022

226 1/2022

227 1/2022

228 1/2022

229 1/2022

230 1/2022

231 1/2022

232 1/2022

233 1/2022

234 1/2022

235 1/2022

236 1/2022

237 1/2022

238 1/2022

239 1/2022

240 1/2022

241 1/2022

242 1/2022

243 1/2022

244 1/2022

245 1/2022

246 1/2022

247 1/2022

248 1/2022

249 1/2022

250 1/2022

251 1/2022

252 1/2022

253 1/2022

254 1/2022

255 1/2022

256 1/2022

257 1/2022

258 1/2022

259 1/2022

260 1/2022

261 1/2022

262 1/2022

263 1/2022

264 1/2022

265 1/2022

266 1/2022

267 1/2022

268 1/2022

269 1/2022

270 1/2022

271 1/2022

272 1/2022

273 1/2022

274 1/2022

275 1/2022

276 1/2022

277 1/2022

278 1/2022

279 1/2022

280 1/2022

281 1/2022

282 1/2022

283 1/2022

284 1/2022

285 1/2022

286 1/2022

287 1/2022

288 1/2022

289 1/2022

290 1/2022

291 1/2022

292 1/2022

293 1/2022

294 1/2022

295 1/2022

296 1/2022

297 1/2022

298 1/2022

299 1/2022

300 1/2022

301 1/2022

302 1/2022

303 1/2022

304 1/2022

305 1/2022

306 1/2022

307 1/2022

308 1/2022

309 1/2022

310 1/2022

311 1/2022

312 1/2022

313 1/2022

314 1/2022

315 1/2022

316 1/2022

317 1/2022

318 1/2022

319 1/2022

320 1/2022

321 1/2022

322 1/2022

323 1/2022

324 1/2022

325 1/2022

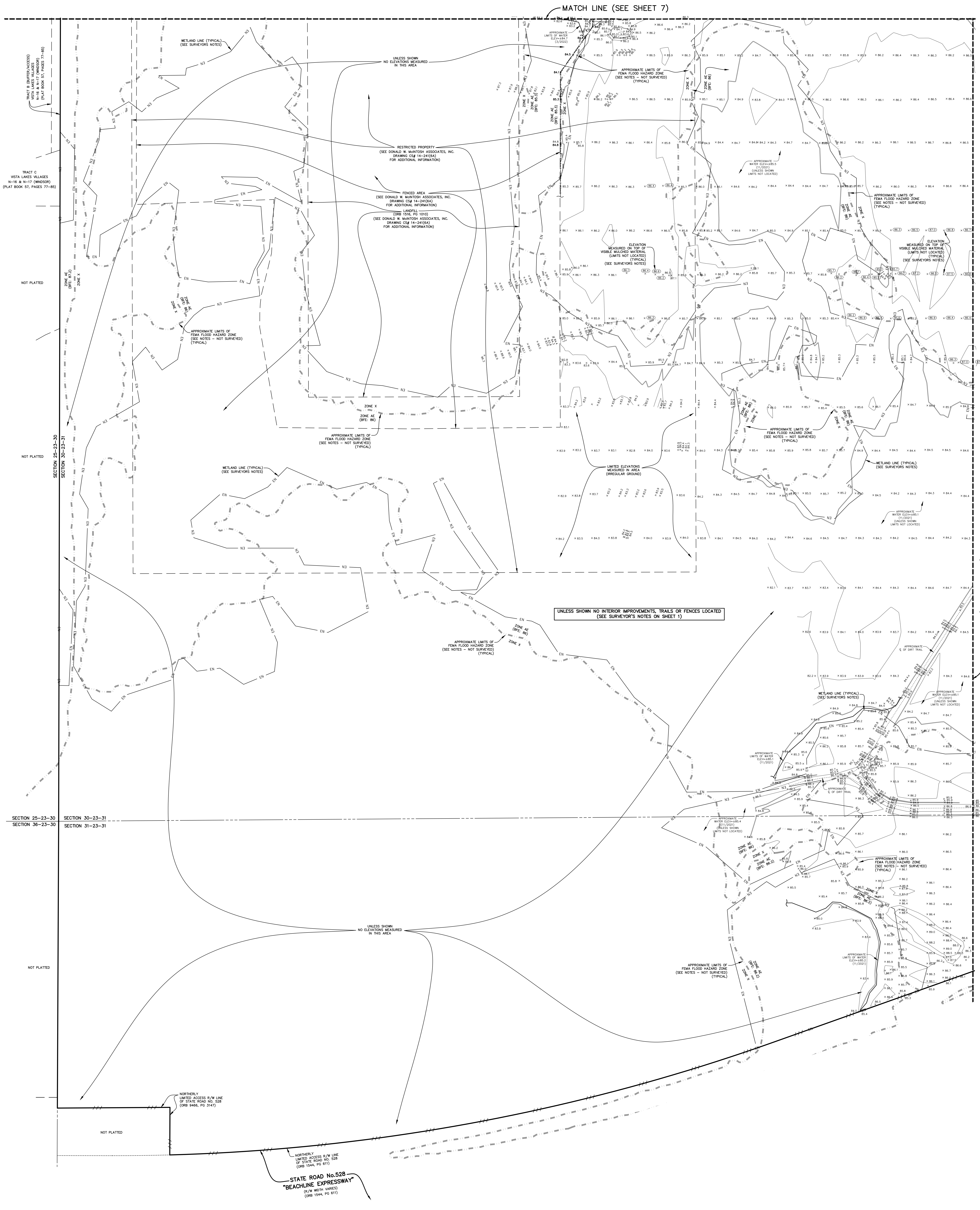
326 1/2022

327 1/2022

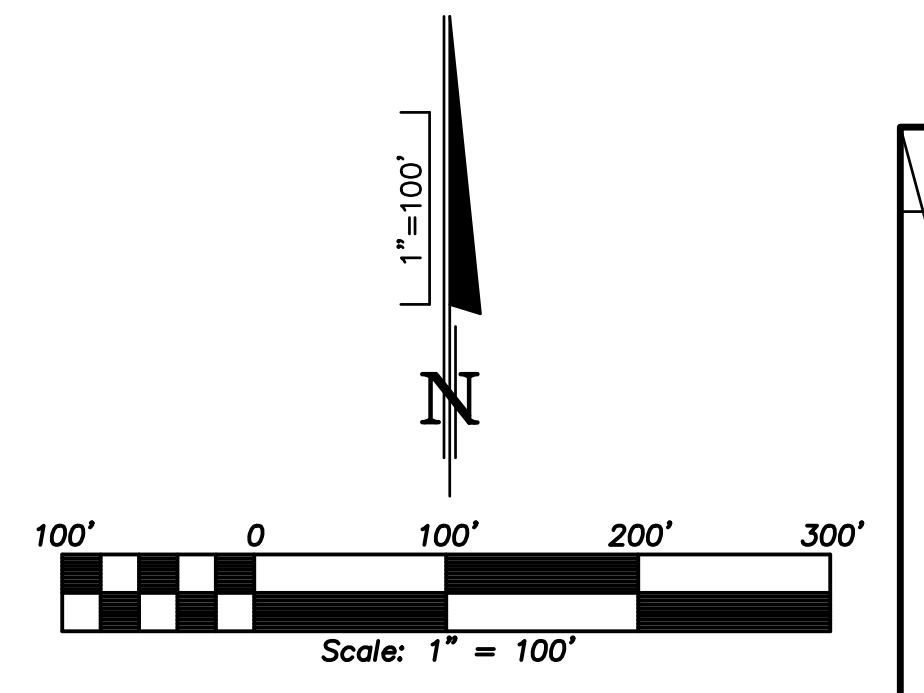
328 1/2022

329 1/2022

330 1/2022

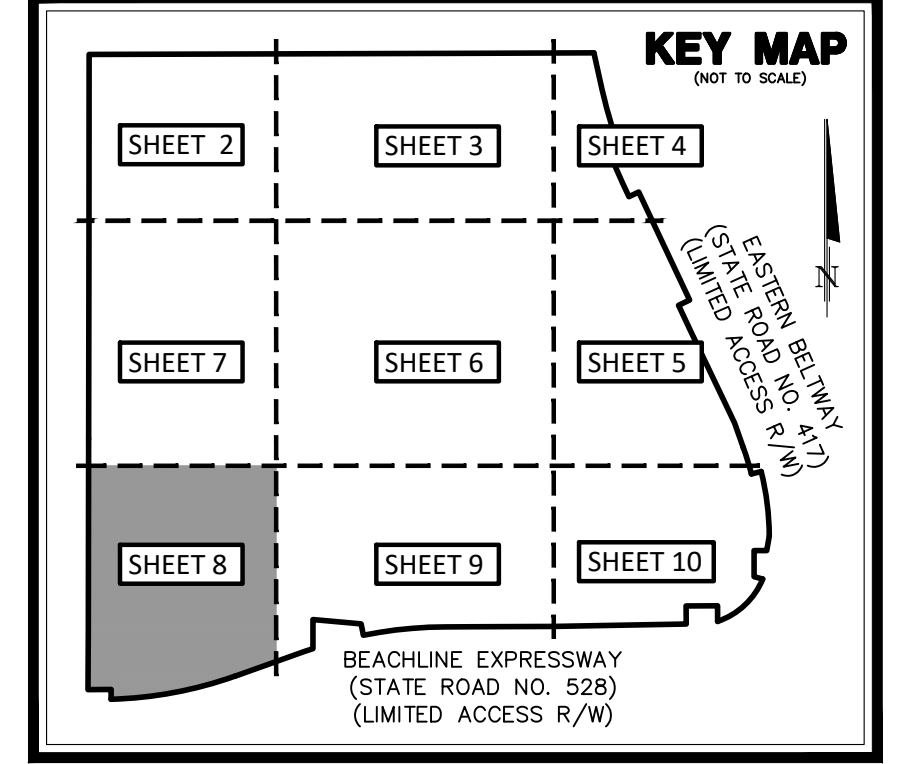


TOPOGRAPHIC SURVEY



The boundary and elevation shown herein are in grid position, relative to Florida State Plane Coordinate System, Florida East Zone, 1983 North American Datum, 2011 adjustment average central scale factor: 0.99994823. All dimensions are Grid dimensions in U.S. Survey Feet, based on used Florida State Plane Coordinate System, Florida East Zone, 1983 North American Datum, 2011 adjustment.

SEE SHEET 1 FOR NOTES AND LEGEND
NOTE: ELEVATIONS SHOWN HEREON ARE RELATIVE TO NAVD83 VERTICAL DATUM.



DONALD W. MCINTOSH ASSOCIATES, INC.

DONALD W. MCINTOSH ASSOCIATES, INC.
ENGINEERS
2200 PARK AVENUE NORTH, WINTER PARK, FLORIDA 32789 (407) 644-4088
CERTIFICATE OF AUTHORIZATION NO. 1888

DRAWN BY: PH
CHECKED BY: SG
DATE: 1/2022

JOB NUMBER: 20576
SCALE: 1" = 100'
DATE: 10/24/2021

REVISIONS

NO.	DATE	DESCRIPTION

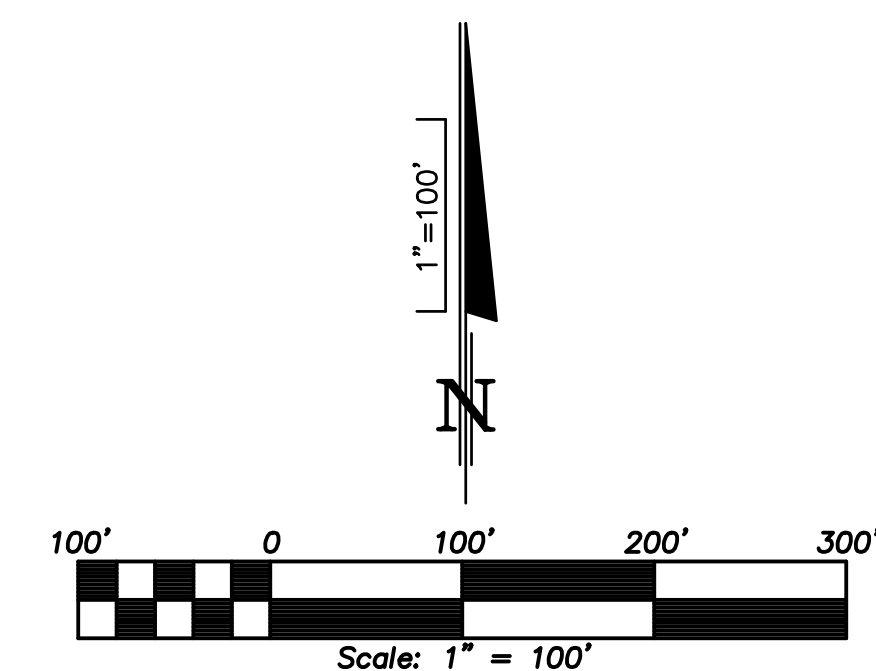
BEACHLINE NORTH RESIDENTIAL, LLC

PREPARED FOR:
BEACHLINE EXPRESSWAY (STATE ROAD NO. 528) (LIMITED ACCESS R/W)

SHEET
8 of 10
Riverside Topographic Survey (Portions of Sections 19, 20, 29, 30 & 31, Township 23 South, Range 31 East, Orange County, Florida)

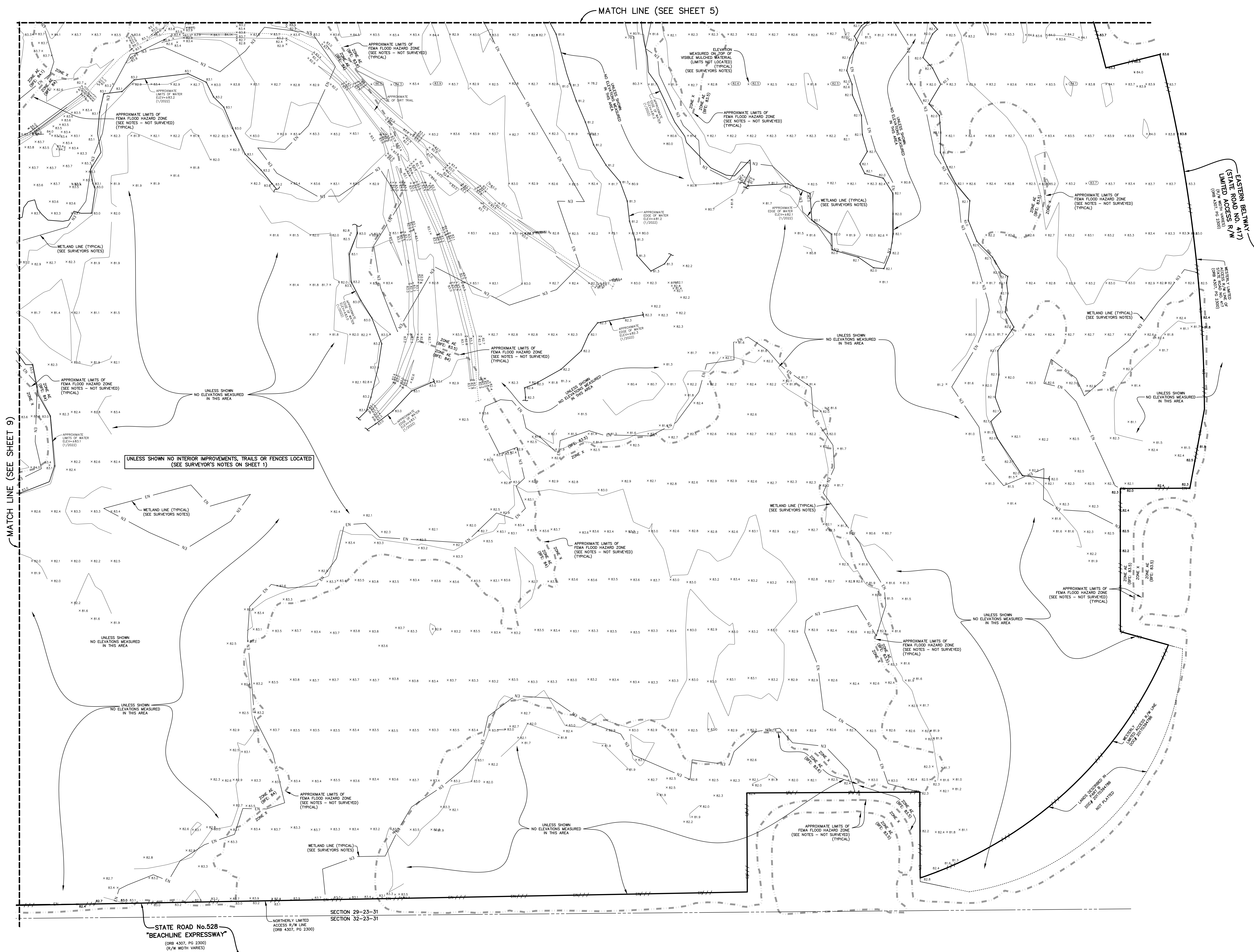
F:\Projects\19088\Survey\Map\14-24\125 Riverside Topographic Survey (NA83-2011 NAVD83).dwg

TOPOGRAPHIC SURVEY



The boundary and elevation shown herein are in grid position, relative to Florida State Plane Coordinate System, Florida East Zone, 1983 North American Datum, 2011 adjustment average central scale factor: 0.99994823. All dimensions are Grid dimensions in U.S. Survey Feet, based on used Florida State Plane Coordinate System, Florida East Zone, 1983 North American Datum, 2011 adjustment.

SEE SHEET 1 FOR NOTES AND LEGEND
NOTE: ELEVATIONS SHOWN HEREON ARE RELATIVE TO NAVD83 VERTICAL DATUM.



MATCH LINE (SEE SHEET 9)

EASTERN BOLLMAN (STATE ROAD NO. 417) LIMITED ACCESS R/W

STATE ROAD No. 528
"BEACHLINE EXPRESSWAY"
(ORR 4202, PG 2300
(R/W WIDTH Varies)

SECTION 29-23-31
SECTION 32-23-31

NO.	DATE	DESCRIPTION	REVISIONS

DONALD W. MCINTOSH ASSOCIATES, INC.
ENGINEERS
2200 PARK AVENUE NORTH, WINTER PARK, FLORIDA 32789 (407) 644-4088
CERTIFICATE OF AUTHORIZATION NO. 1888
SCALE: 1" = 100'
JOB NUMBER: 205276
DATE: 1/2022
DRAWN BY: PH
CHECKED BY: SG

BEACHLINE NORTH RESIDENTIAL, LLC
PREPARED FOR:
DRAWING NO. CS# 14-241(23)
SHEET
10 of 10
Beachline Topographic Survey (Portions of Sections 19, 20, 29, 30 & 31, Township 23 South, Range 31 East, Orange County, Florida)
DATE: 1/2022
REVISIONS: 01/2022

