

Parramore K-8 Community School

CITY OF ORLANDO INVESTMENTS



City of Orlando Investments and Engagement

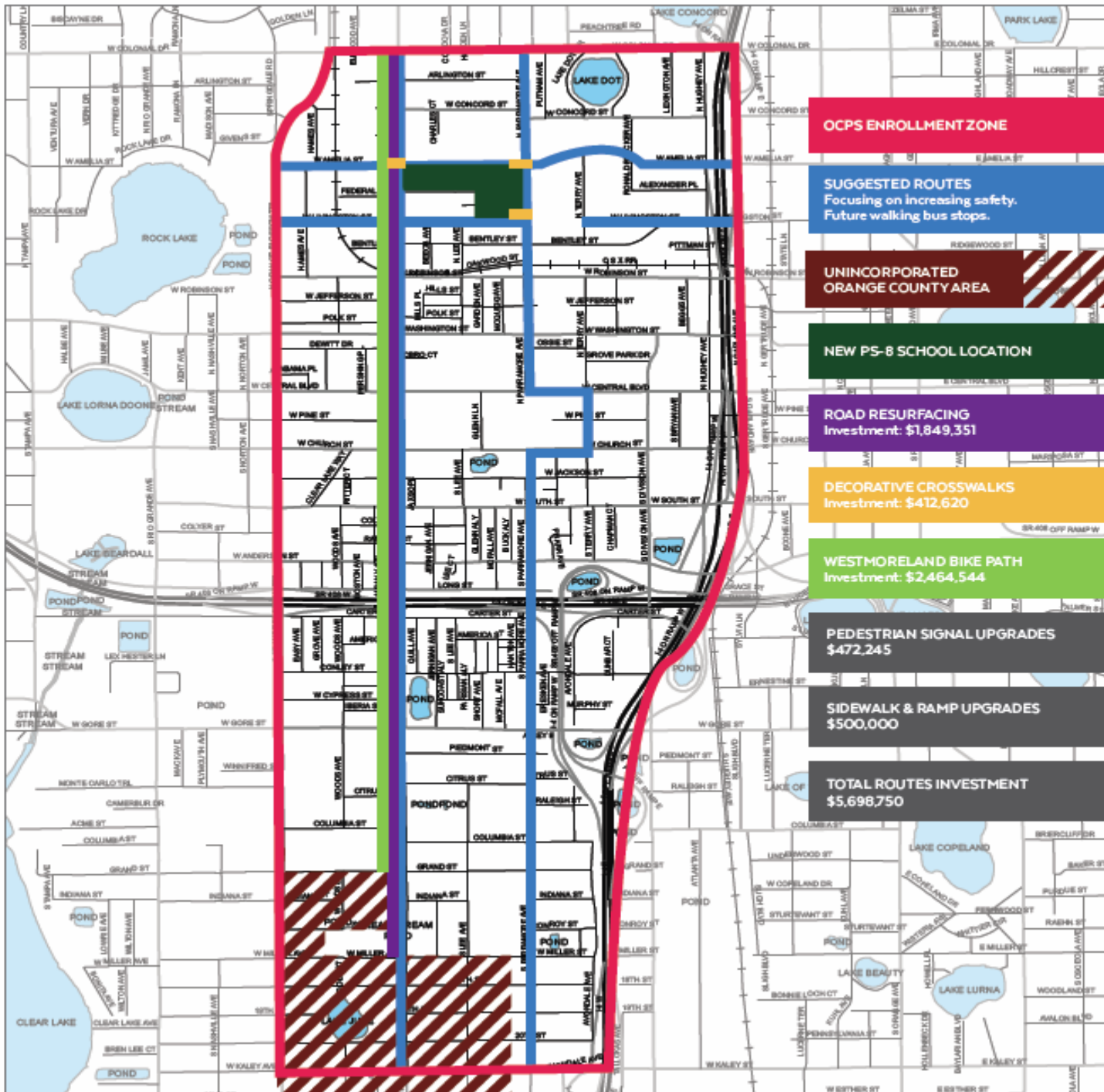
Investments

- Original assemblage of the property for the school site
- Bike Trail and Sidewalk Enhancement
- Safe Walking Zone
 - Pedestrian and Traffic Signal Upgrades
 - ADA Ramp Installations and Upgrades
- Decorative Crosswalk

Community Engagement

- Engaging stakeholders
- Fostering neighborhood partnerships
- Expanding Crossing Guard Posts
- Walking School Bus
- Engaging City Facilities

Bike Trail and Sidewalk Enhancement



OCPS ENROLLMENT ZONE

SUGGESTED ROUTES
Focusing on increasing safety.
Future walking bus stops.

**UNINCORPORATED
ORANGE COUNTY AREA**

NEW PS-8 SCHOOL LOCATION

ROAD RESURFACING
Investment: \$1,849,351

DECORATIVE CROSSWALKS
Investment: \$412,620

WESTMORELAND BIKE PATH
Investment: \$2,464,544

PEDESTRIAN SIGNAL UPGRADES
\$472,245

SIDEWALK & RAMP UPGRADES
\$500,000

TOTAL ROUTES INVESTMENT
\$5,698,750

Bike Trail and Sidewalk Enhancement

- Sidewalk provided on both sides on all major streets
- Sidewalk provided on one side of all local streets
- 325 Sidewalk points repaired
- +90 ADA ramps repaired and added
- 175 New or updated crosswalks

Bike Trail and Sidewalk Enhancement

- Road Resurfacing Investment
 - \$1,849,351
- Decorative Crosswalks Investment
 - \$412,620
- Westmoreland Bike Path Investment
 - \$2,464,544
- Pedestrian Signal Upgrades
 - \$472,245
- Sidewalk and Ramp Upgrades
 - \$500,000

Bike Trail and Sidewalk Enhancement

Total Route Investment

\$5,698,750

Bike Trail and Sidewalk Enhancement



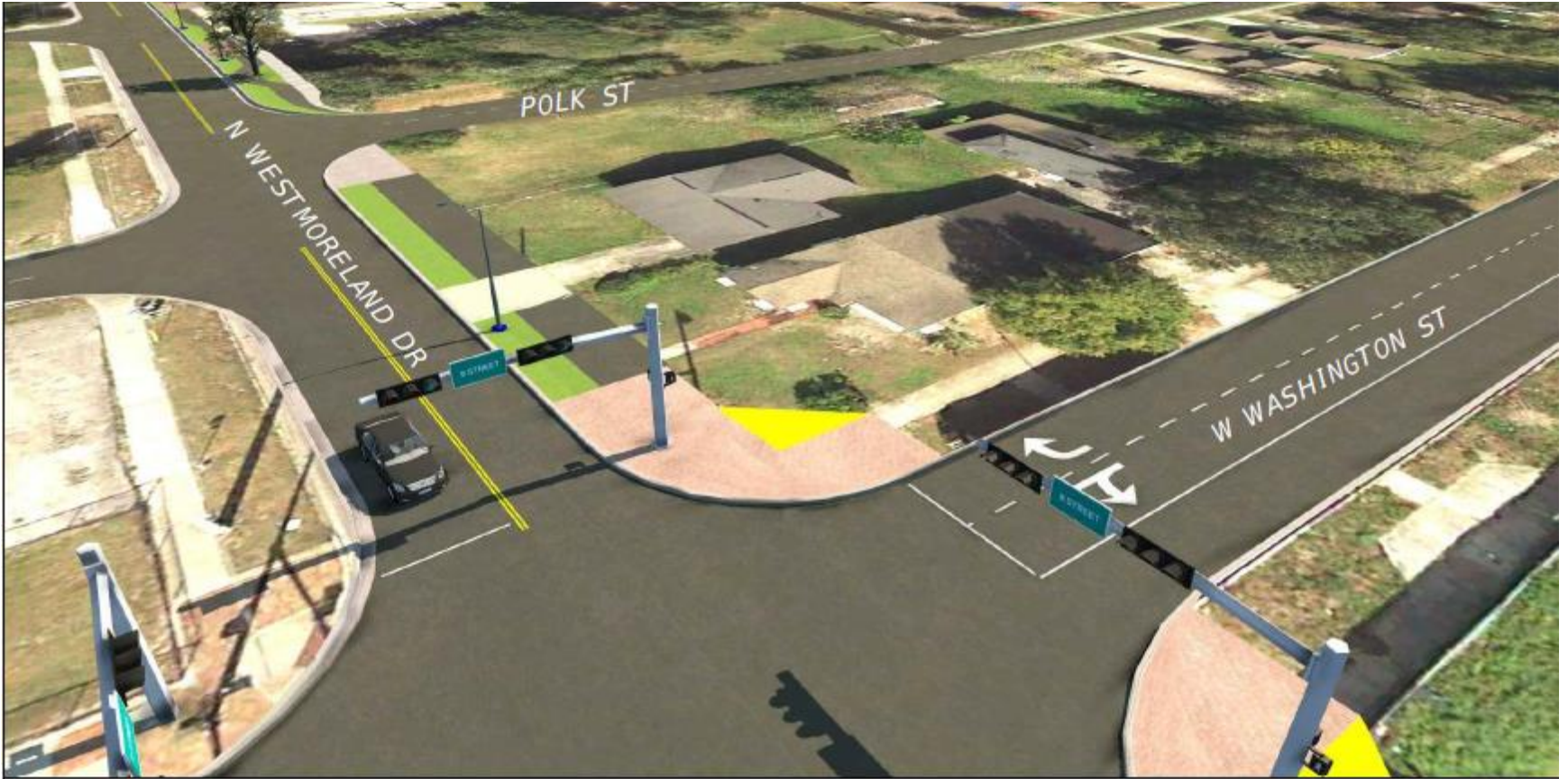
Bike Trail and Sidewalk Enhancement



Bike Trail and Sidewalk Enhancement

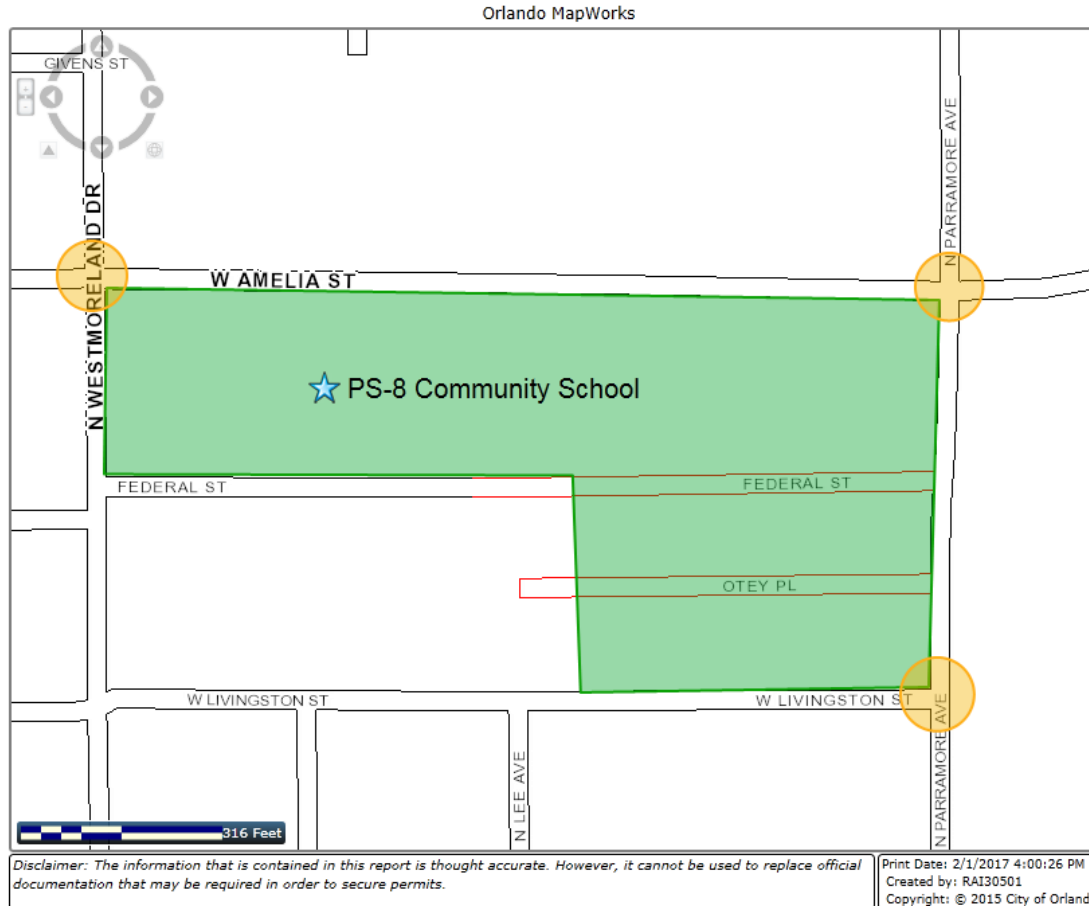


Bike Trail and Sidewalk Enhancement



Decorative Crosswalk

Decorative Crosswalk



Example of Crosswalk Artwork



Safe Walking and Community Engagement



Parramore SAFE WALKING PS8 Stakeholder Map



Legend

- PS8 Community School Enrollment Zone
- Parramore Kidz Zone
- City of Orlando Jurisdiction

Church

Crossing Guard Post

- Existing
- Initial
- Potential

Neighborhood Partners

- 1 City of Orlando, Downtown Recreation Center
- 2 UCF and Downtown Campus at Creative Village
- 3 City of Orlando, Dr. J.B. Callahan Neighborhood Center
- 4 New Image Youth Center
- 5 Simeon Resource & Development Center for Men, Inc.
- 6 City of Orlando, John H. Jackson Community Center
- 7 4C Early Head Start
- 8 Orange County, Head Start
- 9 Orange County,

Crossing Guard Posts

- 4 Existing Posts
- 10 Initial Additional Posts
- 10 Potential Additional Posts via Community Engagement

Potential Neighborhood Partners

- City of Orlando, Downtown Recreation Center
- City of Orlando, Dr. J.B. Callahan Neighborhood Center
- City of Orlando, John H. Jackson Community Center
- New Image Youth Center
- Kaley Square
- Soldiers to Scholars
- Page 15

Potential Safe Walk to School Tools

- “Adopt a Crosswalk” program
 - Stakeholder/partner attends to a crosswalk and provides crossing guard
- Walking School Bus
 - Stakeholders and partners participate in safely walking students to and from school
- Bike Train
 - Similar to walking school bus: 1 parent for every 2-3 students

Engaging Neighborhood Stakeholders

- Where to begin
 - Develop core stakeholder/champions team (School, PTA, Parents, Volunteers, Teachers)
 - Identify PTA volunteers or teacher(s) interested in leading
 - Create a contact list of interested people
 - Choose a proposed route based on student enrollment areas
 - Test it w/adults, then decide the logistics (time, frequency, etc.)
 - Decide how often you will walk (mornings/afternoons, daily, weekly, etc.) and what time to meet
 - Spread the word via posters, flyers, etc. (City can help publicize and refer)
 - City can install “Walking School Bus” signs @ rally points

Questions?