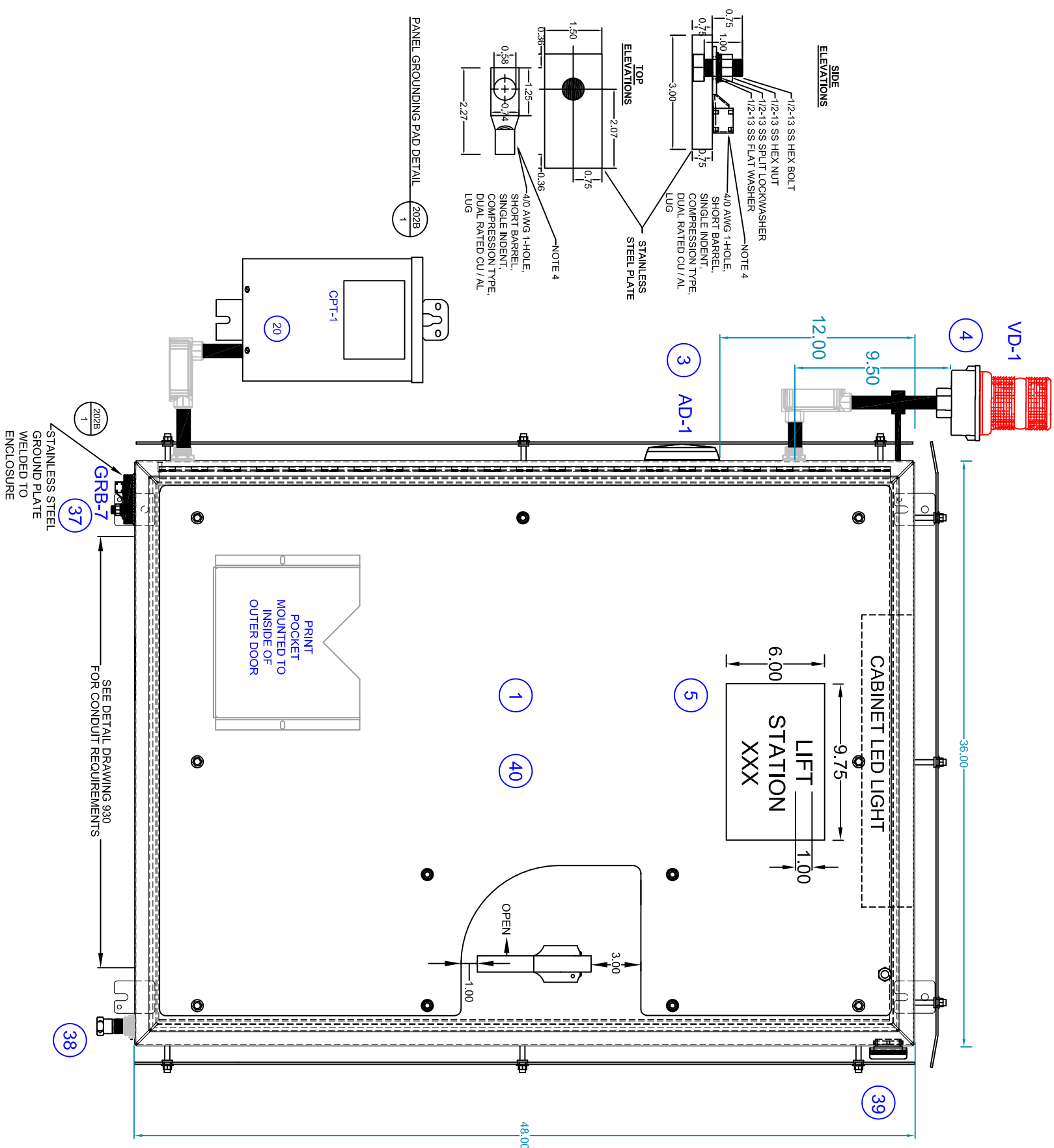
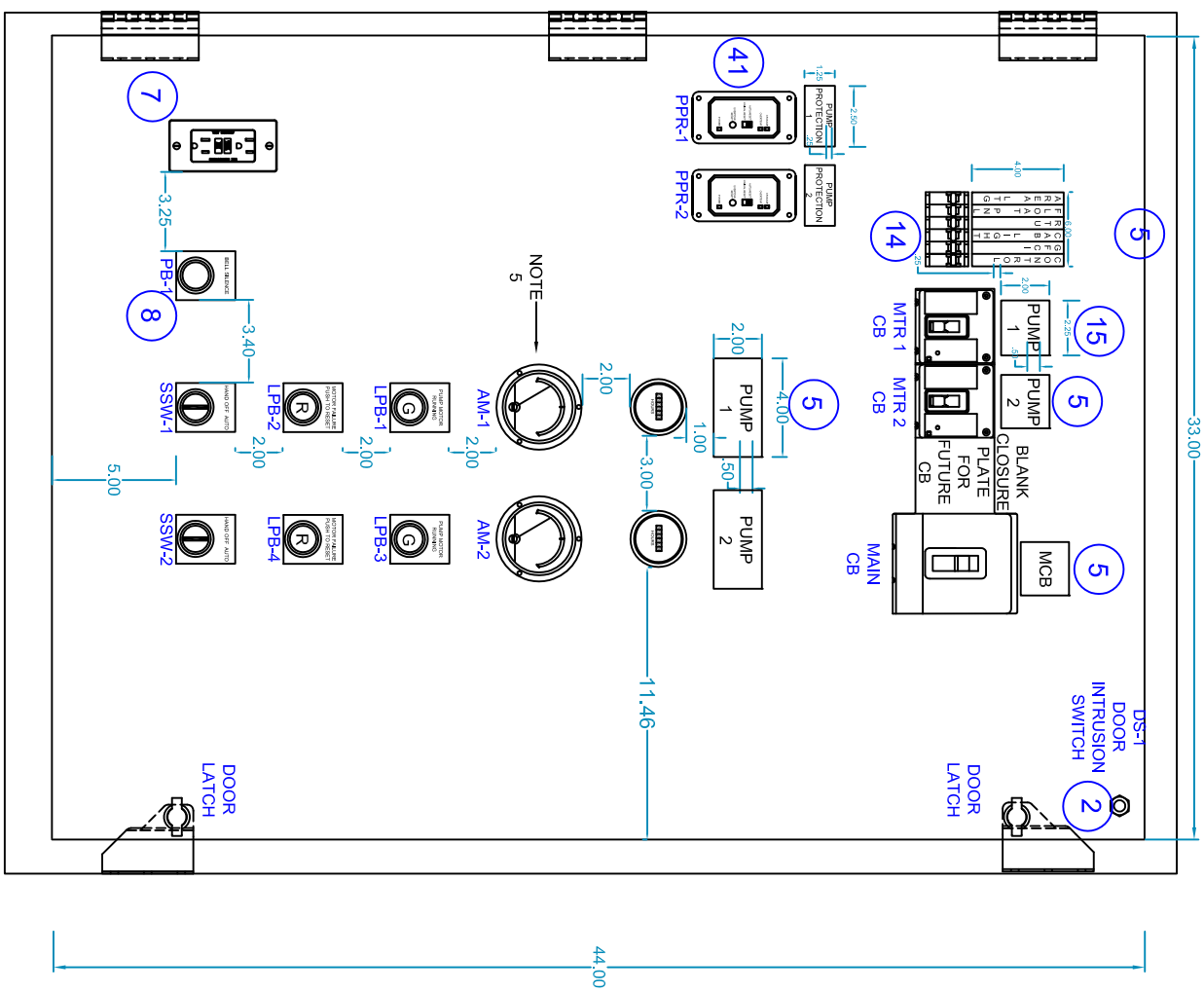



**DIMENSIONS IN
INCHES**



- NOTES:
1. MOTOR CONTROL WIRING LIMITED TO A MAXIMUM OF: 15 HP @ 230 VOLTS 25 HP @ 460 VOLTS
 2. FRONT SUNSHIELD IS NOT ILLUSTRATED FOR CLARITY. FRONT SHIELD ON ENCLOSURE IS REQUIRED AS PER COO SPECIFICATION.
 3. COMPONENT IDENTIFICATION REFLECTED ON BILL OF MATERIALS DRAWING # 204
 4. # 6 1-HOLE, SHORT BARREL, SINGLE INDENT, COMPRESSION TYPE, DUAL RATED CU / AL LUG FOR GRB-6.
 5. METER RANGE SHALL BE LIMITED TO 50% * AND NO < NAMEPLATE RATING OF MOTOR.



SCALE: N.T.S.		-	REVISIONS AS PER MEETING	09-09-2013	JG
DESIGN: JAG / LS					
DRAWN BY: JG					
APPROVED BY: WW		NO	REVISION	DATE	BY
<div style="display: flex; justify-content: space-between; align-items: center;"> <div style="text-align: center;">  <p> WASTEWATER DIVISION, INDUSTRIAL AUTOMATION GROUP _____ CITY OF ORLANDO, FLORIDA </p> </div> <div style="text-align: right;"> <p>TITLE:</p> <p> LIFT STATIONS STANDARDS < 25 HP NEMA STARTER DUPLEX PCP FOR STATIONERY GENERATOR FRONT AND INNER PANEL ELEVATIONS </p> </div> </div>					
<div style="display: flex; justify-content: space-between; align-items: center;"> <div style="text-align: center;"> <p><u>SHEET</u></p> <p>202B</p> </div> </div>					